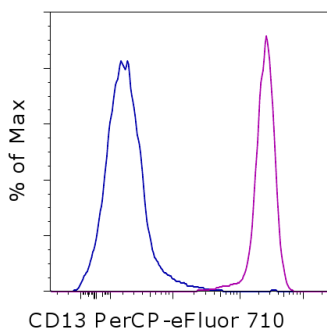


## Anti-Human CD13 PerCP-eFluor® 710

**Catalog Number:** 46-0138

**Also known as:** Alanyl Aminopeptidase (ANPEP), Aminopeptidase N (PEPN)

**RUO: For Research Use Only. Not for use in diagnostic procedures.**



Staining of normal human peripheral blood cells with Mouse IgG1 K Isotype Control PerCP-eFluor® 710 (cat. 46-4714) (blue histogram) or Anti-Human CD13 PerCP-eFluor® 710 (purple histogram). Cells in the granulocyte gate were used for analysis.

### Product Information

**Contents:** Anti-Human CD13 PerCP-eFluor® 710



**Catalog Number:** 46-0138

**Clone:** WM-15 (WM15)

**Concentration:** 5 µL (0.25 µg)/test

**Host/Isotype:** Mouse IgG1, kappa

**HLDA Workshop:** III M213



**Formulation:** aqueous buffer, 0.09% sodium azide, may contain carrier protein/stabilizer

**Temperature Limitation:** Store at 2-8°C. Do not freeze. Light-sensitive material.

**Batch Code:** Refer to vial

**Use By:** Refer to vial

**Contains sodium azide**

### Description

The WM-15 monoclonal antibody reacts with human CD13, also known as aminopeptidase N. CD13 is a transmembrane ectoenzyme occurring on monocytes and granulocytes but not lymphocytes in blood. It is also reportedly on a wide variety of cells and in a wide variety of tissues, including endothelial cells, epithelial cells, fibroblasts, kidney proximal tubules, intestine, and placenta. CD13 is reported to have many different functions including degradation of enkephalins and endorphins, terminal degradation of peptides, amino acid scavenging, antigen processing, and adhesion and migration of cells.

### Applications Reported

This WM-15 (WM15) antibody has been reported for use in flow cytometric analysis.

### Applications Tested

This WM-15 (WM15) antibody has been pre-titrated and tested by flow cytometric analysis of normal human peripheral blood cells. This can be used at 0.25 µL (5 µg) per test. A test is defined as the amount (µg) of antibody that will stain a cell sample in a final volume of 100 µL. Cell number should be determined empirically but can range from 10<sup>5</sup> to 10<sup>8</sup> cells/test.

**PerCP-eFluor® 710 can be used in place of PE-Cy5, PE-Cy5.5 or PerCP-Cy5.5. PerCP-eFluor® 710 emits at 710 nm and is excited with the blue laser (488 nm). Please make sure that your instrument is capable of detecting this fluorochrome. For a filter configuration, we recommend using the 685 LP dichroic mirror and 710/40 band pass filter, however the 695/40 band pass filter is an acceptable alternative.**

**Fixation:** Samples can be stored in IC Fixation Buffer (cat. 00-8222) (100 µL cell sample + 100 µL IC Fixation Buffer) or 1-step Fix/Lyse Solution (cat. 00-5333) for up to 3 days in the dark at 4°C with minimal impact on brightness and FRET efficiency/compensation. Some generalizations regarding fluorophore performance after fixation can be made, but clone specific performance should be determined empirically.

### References

Not for further distribution without written consent.

Copyright © 2000-2012 eBioscience, Inc.

Tel: 888.999.1371 or 858.642.2058 • Fax: 858.642.2046 • [www.ebioscience.com](http://www.ebioscience.com) • [info@ebioscience.com](mailto:info@ebioscience.com)

---

## **Anti-Human CD13 PerCP-eFluor® 710**

**Catalog Number:** 46-0138

**Also known as:** Alanyl Aminopeptidase (ANPEP), Aminopeptidase N (PEPN)

**RUO: For Research Use Only. Not for use in diagnostic procedures.**

---

Look AT, Ashmun RA, Shapiro LH, Peiper SC. 1989. Human myeloid plasma membrane glycoprotein CD13 (gp150) is identical to aminopeptidase N. J Clin Invest 83:1299-1307

Riemann D, Kehlen A, Thiele K, Lohn M, Langner J. 1997. Induction of aminopeptidase N/CD13 on human lymphocytes after adhesion to fibroblast-like synoviocytes, endothelial cells, epithelial cells, and monocytes/macrophages. J Immunol. 158(7):3425-32.

### **Related Products**

00-4300 10X RBC Lysis Buffer (Multi-species)

46-4714 Mouse IgG1 K Isotype Control PerCP-eFluor® 710 (P3.6.2.8.1)