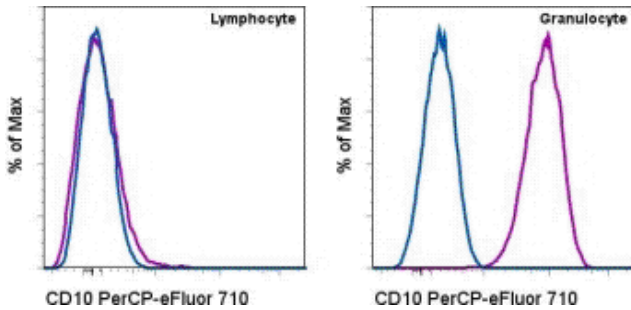


Anti-Human CD10 PerCP-eFluor® 710

Catalog Number: 46-0108

Also Known As: Common Acute Lymphocytic Leukemia antigen (CALLA), Neprilysin,

RUO: For Research Use Only. Not for use in diagnostic procedures.



Staining of normal human peripheral blood cells with Mouse IgG1 K Isotype Control PerCP-eFluor® 710 (cat. 46-4714) (blue histogram) or Anti-Human CD10 PerCP-eFluor® 710 (purple histogram). Cells in the lymphocyte (left) or granulocyte (right) gate were used for analysis.

Product Information

Contents: Anti-Human CD10 PerCP-eFluor® 710

REF **Catalog Number:** 46-0108

Clone: SN5c

Concentration: 5 µL (0.25 µg)/test

Host/Isotype: Mouse IgG1

Formulation: aqueous buffer, 0.09% sodium azide, may contain carrier protein/stabilizer



Temperature Limitation: Store at 2-8°C. Do not freeze. Light sensitive material.



Batch Code: Refer to Vial



Use By: Refer to Vial

Description

The eBioSN5c monoclonal antibody recognizes human CD10 (CALLA, NEP, enkephalinase, Neprilysin), which is a 100 kDa, type II cell surface glycoprotein originally identified for its expression on most acute lymphoblastic leukemias (ALLs). Subsequently, CD10 was shown to be the same molecule as neutral endopeptidase (NEP), or KII-NA. CD10 is a Zn²⁺-dependent metallopeptidase acting on substrates such as endothelin, glucagon, gastrin, neurotensin and bradykinin. CD10 is involved in the regulation of chemotactic and inflammatory processes involving neutrophils. In B cells, CD10 regulates stromal cell-dependent B lymphopoiesis and its expression has been reported on mature germinal center B cells. CD10 expression is also found on normal donor granulocytes and bone marrow stromal cells. Most likely, CB-CALLA and eBioSN5c see different epitopes due to their ability to co-stain.

Applications Reported

This eBioSN5c (SN5c L4-1A1) antibody has been reported for use in flow cytometric analysis.

Applications Tested

This SN5c antibody has been pre-titrated and tested by flow cytometric analysis of normal human peripheral blood cells. This can be used at 5 µL (0.25 µg) per test. A test is defined as the amount (µg) of antibody that will stain a cell sample in a final volume of 100 µL. Cell number should be determined empirically but can range from 10⁵ to 10⁸ cells/test.

PerCP-eFluor® 710 can be used in place of PE-Cy5, PE-Cy5.5 or PerCP-Cy5.5. PerCP-eFluor® 710 emits at 710 nm and is excited with the blue laser (488 nm). Please make sure that your instrument is capable of detecting this fluorochrome. For a filter configuration, we recommend using the 685 LP dichroic mirror and 710/40 band pass filter, however the 695/40 band pass filter is an acceptable alternative.

Fixation: Samples can be stored in IC Fixation Buffer (cat. 00-8222) (100 µL cell sample + 100 µL IC Fixation Buffer) or 1-step Fix/Lyse Solution (cat. 00-5333) for up to 3 days in the dark at 4°C with minimal impact on brightness and FRET efficiency/compensation. Some generalizations regarding fluorophore performance after fixation can be made, but clone specific performance should be determined empirically.

References

Biddle WC, Haruta Y, Seon BK, Henderson ES, Sarcione EJ. In vitro and in vivo cytotoxic activity of anti-human leukemia monoclonal antibodies SN5c and SN6 daunorubicin conjugates. *Leuk Res.* 1989;13(8):699-707.

Matsuzaki H, Haruta Y, Fukukawa T, Barcos MP, Seon BK. Unique epitopes of common acute lymphoblastic leukemia antigen detected by new monoclonal antibodies. *Cancer Res.* 1987 Apr 15;47(8):2160-6. (PubMed)

Related Products

46-4714 Mouse IgG1 K Isotype Control PerCP-eFluor® 710 (P3.6.2.8.1)

Not for further distribution without written consent.

Copyright © 2000-2012 eBioscience, Inc.

Tel: 888.999.1371 or 858.642.2058 • Fax: 858.642.2046 • www.eBioscience.com • info@eBioscience.com