

## PE anti-mouse Galectin-9

**Catalog # / Size:** 136103 / 50 µg  
136104 / 200 µg

**Clone:** RG9-35

**Isotype:** Rat IgG2a, κ

**Immunogen:** Recombinant mouse galectin-9

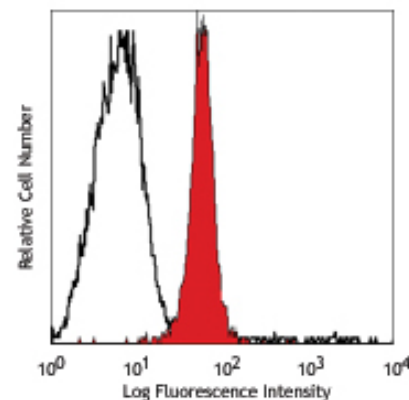
**Reactivity:** Mouse

**Preparation:** The antibody was purified by affinity chromatography, and conjugated with PE under optimal conditions. The solution is free of unconjugated PE and unconjugated antibody.

**Formulation:** Phosphate-buffered solution, pH 7.2, containing 0.09% sodium azide.

**Concentration:** 0.2 mg/ml

**Storage:** The antibody solution should be stored undiluted at 4°C and protected from prolonged exposure to light. **Do not freeze.**



*Intracellular staining of mouse thymocytes with the RG9-35 PE*

## Applications:

**Applications:** ICFC - *Quality tested*

**Recommended Usage:** Each lot of this antibody is quality control tested by intracellular immunofluorescent staining with flow cytometric analysis. For immunofluorescent staining, the suggested use of this reagent is ≤ 0.5 µg per 10<sup>6</sup> cells in 100 µl volume. It is recommended that the reagent be titrated for optimal performance for each application.

**Application References:** 1. Fukushima A, *et al.* 2008. *Int. Arch. Allergy Immunol.* 146:36. (FA)

**Description:** Galectin-9 is a mammalian lectin with a molecular weight of 40 kD that has two conserved carbohydrate recognition domains (CRDs) and forms homodimers. It recognizes N-acetyllactosamine (Galbeta1-4GlcNAc) and T-antigen (Galbeta1-3GalNAc). Tim-3 has been reported as its ligand. Galectin-9 is expressed by lymphocytes, dendritic cells, granulocytes, eosinophils, astrocytes, endothelial cells, fibroblasts, and thymus epithelial cells. It may be retained intracellularly or transported to the cell surface whereby cleavage generates a soluble form. Galectin-9 is involved in events such as cell aggregation, adhesion, chemotaxis, and apoptosis, and is important for the regulation of the immune response. Galectin-9 induces regulatory T cells, and suppresses Th1 and Th17 responses.

**Antigen References:** 1. Klibi J, *et al.* 2009. *Blood* 113:1957  
2. Seki M, *et al.* 2008. *Clin Immunol* 127:78  
3. Tsuboi Y, *et al.* 2007. *Clin Immunol* 124:221  
4. Zhu C, *et al.* 2005. *Nat Immunol* 6:1245  
5. Dunphy JL, *et al.* 2002. *J. Biol. Chem.* 277:14916

Related Products:	Product	Clone	Application
	PE Rat IgG2a, κ Isotype Ctrl	RTK2758	FC, ICFC
	Cell Staining Buffer		FC, ICC, ICFC
	RBC Lysis Buffer (10X)		FC, ICFC
	TruStain fcX™ (anti-mouse CD16/32)	93	FC



For research use only. Not for diagnostic use. Not for resale. BioLegend will not be held responsible for patent infringement or other violations that may occur with the use of our products.



\*These products may be covered by one or more Limited Use Label Licenses (see the BioLegend Catalog or our website, [www.biolegend.com/ordering#license](http://www.biolegend.com/ordering#license)). BioLegend products may not be transferred to third parties, resold, modified for resale, or used to manufacture commercial products, reverse engineer functionally similar materials, or to provide a service to third parties without written approval of BioLegend. By use of these products you accept the terms and conditions of all applicable Limited Use Label Licenses. Unless otherwise indicated, these products are for research use only and are not intended for human or animal diagnostic, therapeutic or commercial use.