

# Product Data Sheet

## LEAF™ Purified anti-mouse FR4 (Folate Receptor 4)

**Catalog # / Size:** 125102 / 500 µg

**Clone:** TH6

**Isotype:** Rat IgG2b, κ

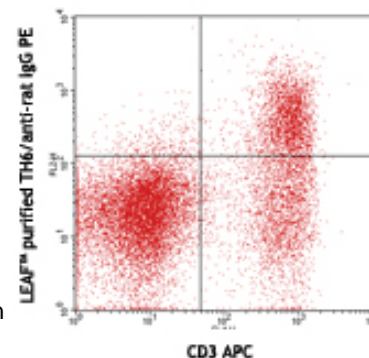
**Reactivity:** Mouse Folate Receptor 4

**Preparation:** The LEAF™ (Low Endotoxin, Azide-Free) antibody was purified by affinity chromatography.

**Formulation:** 0.2 µm filtered in phosphate-buffered solution, pH 7.2, containing no preservative. Endotoxin level is <0.1 EU/µg of the protein (<0.01 ng/µg of the protein) as determined by the LAL test.

**Concentration:** 1.0 mg/ml

**Storage:** The antibody solution should be stored undiluted at 4°C. This LEAF™ solution contains no preservative; handle under aseptic conditions.



*C57BL/6 mouse splenocytes stained with CD3 (145-2C11) APC and LEAF™ purified TH6, followed by anti-rat IgG PE.*

## Applications:

**Applications:** FC - Quality tested  
Cyt - Reported in the literature

**Recommended Usage:** Each lot of this antibody is quality control tested by immunofluorescent staining with flow cytometric analysis. For immunofluorescent staining, the suggested use of this reagent is ≤ 1.0 µg per 10<sup>6</sup> cells in 100 µl volume. It is recommended that the reagent be titrated for optimal performance for each application.

**Application References:** Yamaguchi T, *et al.*:2007. *Immunity* 27 (1):145 (FC Cytotoxicity)

**Description:** Folate receptor 4 (FR4) is a surface receptor for folic acid (Vitamin B9). It was recently reported that FR4 is highly and constitutively expressed on mouse CD4<sup>+</sup>CD25<sup>+</sup> natural regulatory T (Treg) cells. The high expression of this surface marker in combination with CD4 and CD25 can be used to distinguish T reg cells from other types of T cells. Since FR4 is a surface marker, this antibody can be used in combination with anti-CD25 and/or CD4 to sort living Treg cells for functional studies.

**Antigen References:** 1. Yamaguchi T, *et al.*:2007. *Immunity* 27 (1):145  
2. Spiegelstein O, *et al.* 2000. *Gene* 258:117

### Related Products:

**Product**  
LEAF™ Purified Rat IgG2b, κ Isotype Ctrl

Cell Staining Buffer  
RBC Lysis Buffer (10X)

**Clone**  
RTK4530

**Application**  
FC, ICFC, WB, IP, ICC, IF,  
IHC, FA  
FC, ICC, ICFC  
FC, ICFC



For research use only. Not for diagnostic use. Not for resale. BioLegend will not be held responsible for patent infringement or other violations that may occur with the use of our products.



\*These products may be covered by one or more Limited Use Label Licenses (see the BioLegend Catalog or our website, [www.biolegend.com/ordering#license](http://www.biolegend.com/ordering#license)). BioLegend products may not be transferred to third parties, resold, modified for resale, or used to manufacture commercial products, reverse engineer functionally similar materials, or to provide a service to third parties without written approval of BioLegend. By use of these products you accept the terms and conditions of all applicable Limited Use Label Licenses. Unless otherwise indicated, these products are for research use only and are not intended for human or animal diagnostic, therapeutic or commercial use.