

# Product Data Sheet

## FITC anti-mouse FR4 (Folate Receptor 4)

**Catalog # / Size:** 125005 / 50 µg  
125006 / 200 µg

**Clone:** 12A5

**Isotype:** Rat IgG2b, κ

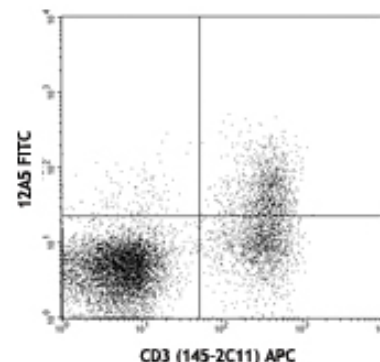
**Reactivity:** Mouse Folate Receptor 4

**Preparation:** The antibody was purified by affinity chromatography, and conjugated with FITC under optimal conditions. The solution is free of unconjugated FITC.

**Formulation:** Phosphate-buffered solution, pH 7.2, containing 0.09% sodium azide.

**Concentration:** 0.5 mg/ml

**Storage:** The antibody solution should be stored undiluted at 4°C and protected from prolonged exposure to light. **Do not freeze.**



C57BL/6 mouse splenocytes stained with CD3 (145-2C11) APC and 12A5 FITC

## Applications:

**Applications:** FC - Quality tested

**Recommended Usage:** Each lot of this antibody is quality control tested by immunofluorescent staining with flow cytometric analysis. For immunofluorescent staining, the suggested use of this reagent is  $\leq 0.25 \mu\text{g}$  per  $10^6$  cells in  $100 \mu\text{l}$  volume. It is recommended that the reagent be titrated for optimal performance for each application.

**Application References:** 1. Yamaguchi T *et al.* 1007:Immunity 27(1)145

**Description:** Folate receptor 4 (FR4) is a surface receptor for folic acid (Vitamin B9). It was recently reported that FR4 is highly and constitutively expressed on mouse CD4<sup>+</sup> CD25<sup>+</sup> natural regulatory T cells (Treg). The high expression of this surface marker on Treg can be used in combination with CD4 and CD25 to distinguish Treg from other types of T cells. Since FR4 is a surface marker, this antibody may be used in combination with anti-CD4 and/or CD25 to sort living T reg cells for functional studies.

**Antigen References:** 1. Yamaguchi T *et al.* 2007. Immunity 27:145  
2. Spiegelstein O *et al.* 2000 Gene 258:117

### Related Products:

Product  
FITC Rat IgG2b, κ Isotype Ctrl  
Cell Staining Buffer  
RBC Lysis Buffer (10X)  
TruStain fcX™ (anti-mouse CD16/32)

Clone  
RTK4530

93

Application  
FC, ICFC  
FC, ICC, ICFC  
FC, ICFC  
FC



For research use only. Not for diagnostic use. Not for resale. BioLegend will not be held responsible for patent infringement or other violations that may occur with the use of our products.



\*These products may be covered by one or more Limited Use Label Licenses (see the BioLegend Catalog or our website, [www.biollegend.com/ordering#license](http://www.biollegend.com/ordering#license)). BioLegend products may not be transferred to third parties, resold, modified for resale, or used to manufacture commercial products, reverse engineer functionally similar materials, or to provide a service to third parties without written approval of BioLegend. By use of these products you accept the terms and conditions of all applicable Limited Use Label Licenses. Unless otherwise indicated, these products are for research use only and are not intended for human or animal diagnostic, therapeutic or commercial use.