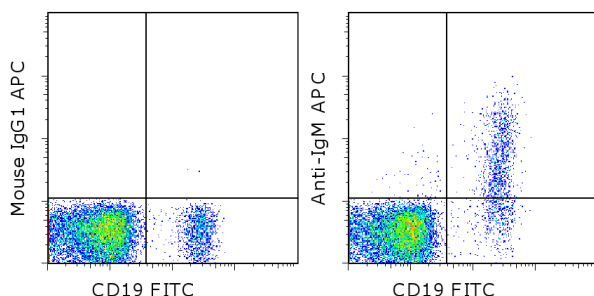


## Anti-Human IgM APC

**Catalog Number:** 17-9998

**For Research Use Only. Not for use in diagnostic procedures.**



Staining of normal human peripheral blood cells with Anti-Human CD19 FITC (cat. 11-0199) and Mouse IgG1 K Isotype Control APC (cat. 17-4714) (left) or Anti-Human IgM APC (right). Cells in the lymphocyte gate were used for analysis.

### Product Information



**Contents:** Anti-Human IgM APC  
**Catalog Number:** 17-9998  
**Clone:** SA-DA4  
**Concentration:** 5  $\mu$ L (0.06  $\mu$ g)/test  
**Host/Isotype:** Mouse IgG1, kappa



**Formulation:** aqueous buffer, 0.09% sodium azide, may contain carrier protein/stabilizer

**Temperature Limitation:** Store at 2-8°C. Do not freeze. Light-sensitive material.



**Batch Code:** Refer to vial



**Use By:** Refer to vial

### Description

The SA-DA4 monoclonal antibody reacts with the mu heavy chain of human IgM. It does not react with other classes of human immunoglobulin including IgD, IgG, or IgA. IgM is expressed intracellularly, during early stages of B lymphopoiesis, and then on the surface of mature B cells.

Our testing has revealed variations in staining of the non-B cell population that is predicted to be non-specific. This variation can be attributed to both donor variability and the anticoagulant used during blood draw. Therefore, we recommend using sodium citrate as the anticoagulant to minimize non-specific staining by this antibody.

### Applications Reported

This SA-DA4 antibody has been reported for use in flow cytometric analysis and immunohistochemical staining of frozen tissue sections.

### Applications Tested

This SA-DA4 antibody has been pre-titrated and tested by flow cytometric analysis of normal human peripheral blood cells. This can be used at 5  $\mu$ L (0.06  $\mu$ g) per test. A test is defined as the amount ( $\mu$ g) of antibody that will stain a cell sample in a final volume of 100  $\mu$ L. Cell number should be determined empirically but can range from  $10^5$  to  $10^8$  cells/test.

### References

Szyszkowski EA, Brun JG, Skarstein K, Peck AB, Jonsson R, Brokstad KA. Phenotypic diversity of peripheral blood plasma cells in primary Sjögren's syndrome. *Scand J Immunol.* 2011 Jan;73(1):18-28. (**SA-DA4**, FC)

Pack M, Trumfheller C, Thomas D, Park CG, Graneli-Piperno A, Münz C, Steinman RM. DEC-205/CD205+ dendritic cells are abundant in the white pulp of the human spleen, including the border region between the red and white pulp. *Immunology.* 2008 Mar;123(3):438-46. (**SA-DA4**, IHC-fr)

### Related Products

11-0199 Anti-Human CD19 FITC (HIB19)  
17-4714 Mouse IgG1 K Isotype Control APC (P3.6.2.8.1)

Not for further distribution without written consent.

Copyright © 2000-2012 eBioscience, Inc.

Tel: 888.999.1371 or 858.642.2058 • Fax: 858.642.2046 • [www.ebioscience.com](http://www.ebioscience.com) • [info@ebioscience.com](mailto:info@ebioscience.com)

---

**Anti-Human IgM APC**

**Catalog Number:** 17-9998

**For Research Use Only. Not for use in diagnostic procedures.**

---

---

Not for further distribution without written consent.

Copyright © 2000-2012 eBioscience, Inc.

Tel: 888.999.1371 or 858.642.2058 • Fax: 858.642.2046 • [www.ebioscience.com](http://www.ebioscience.com) •  
[info@ebioscience.com](mailto:info@ebioscience.com)