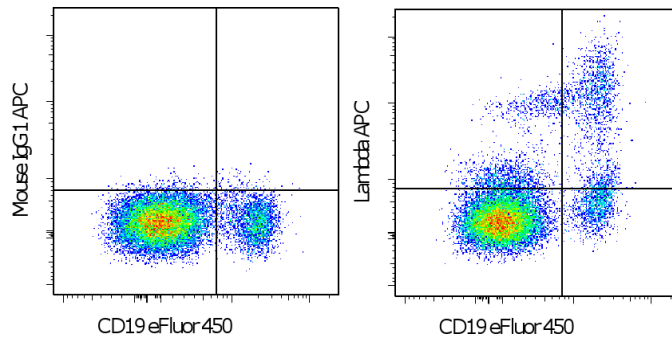


## Anti-Human Ig lambda Light Chain APC

**Catalog Number:** 17-9990

**Also known as:** Immunoglobulin L, IgL

**RUO: For Research Use Only. Not for use in diagnostic procedures.**



Staining of normal human peripheral blood cells with Anti-Human CD19 eFluor<sup>®</sup> 450 (cat. 48-0199) and Mouse IgG1 K Isotype Control APC (cat. 17-4714) (left) or Anti-Human Ig lambda Light Chain APC (right). Cells in the lymphocyte gate were used for analysis.

### Product Information

**Contents:** Anti-Human Ig lambda Light Chain APC

**REF** **Catalog Number:** 17-9990

**Clone:** 1-155-2

**Concentration:** 5 uL (0.25 ug)/test

**Host/Isotype:** Mouse IgG1, kappa

**Formulation:** aqueous buffer, 0.09% sodium azide, may contain carrier protein/stabilizer

**Temperature Limitation:** Store at 2-8°C. Do not freeze. Light sensitive material.

**Batch Code:** Refer to vial

**Use By:** Refer to vial

### Description

The monoclonal antibody 1-155-2 recognizes the lambda light chain of human immunoglobulin. Approximately 22-kDa, the Ig lambda chain is comprised of one variable and one constant region. Two lambda chains together with the heavy chain comprise the whole Ig structure. Expression of Ig lambda is typically found in less than half of B lymphocytes, and has been associated with neoplastic lymphomas.

### Applications Reported

This 1-155-2 antibody has been reported for use in flow cytometric analysis.

### Applications Tested

This 1-155-2 antibody has been pre-titrated and tested by flow cytometric analysis of normal human peripheral blood cells. This can be used at 5 µL (0.25 µg) per test. A test is defined as the amount (ug) of antibody that will stain a cell sample in a final volume of 100 µL. Cell number should be determined empirically but can range from 10<sup>5</sup> to 10<sup>8</sup> cells/test.

### References

Bahler DW, Pindzola JA, Swerdlow SH. Splenic marginal zone lymphomas appear to originate from different B cell types. *m J Pathol.* 2002 Jul;161(1):81-8.

Perez MT, Cabello-Inchausti B, Viamonte M Jr, Nixon D. Pleural body cavity-based lymphoma. *Ann Diagn Pathol* 1998; 2: 127-134

### Related Products

17-4714 Mouse IgG1 K Isotype Control APC (P3.6.2.8.1)

48-0199 Anti-Human CD19 eFluor<sup>®</sup> 450 (HIB19)

Not for further distribution without written consent.

Copyright © 2000-2012 eBioscience, Inc.

Tel: 888.999.1371 or 858.642.2058 • Fax: 858.642.2046 • [www.ebioscience.com](http://www.ebioscience.com) •  
[info@ebioscience.com](mailto:info@ebioscience.com)