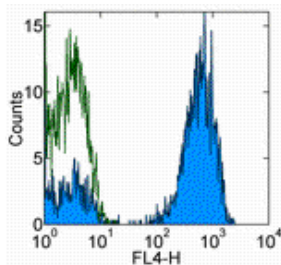


Anti-Human alpha beta TCR APC

Catalog Number: 17-9986

RUO: For Research Use Only. Not for use in diagnostic procedures.



Staining of normal human peripheral blood cells with Mouse IgG1 K Isotype Control APC (cat. 17-4714) (open histogram) or Anti-Human alpha beta TCR APC (filled histogram). Cells in the lymphocyte gate were used for analysis.

Product Information

Contents: Anti-Human alpha beta TCR APC

 **Catalog Number:** 17-9986

Clone: IP26

Concentration: 5 μ L (0.5 μ g)/test

Host/Isotype: Mouse IgG1, kappa

Formulation: aqueous buffer, 0.09% sodium azide, may contain carrier protein/stabilizer



Temperature Limitation: Store at 2-8°C. Do not freeze. Light sensitive material.



Batch Code: Refer to Vial



Use By: Refer to Vial



Caution, contains Azide

Description

The IP26 monoclonal antibody reacts with the alpha beta chain of human TCR. The alpha beta TCR is expressed by the majority of peripheral T cells.

Applications Reported

This IP26 antibody has been reported for use in flow cytometric analysis.

Applications Tested

This IP26 antibody has been pre-titrated and tested by flow cytometric analysis of human peripheral blood leukocytes. This can be used at 5 μ L (0.5 μ g)/per test. A test is defined as the amount (μ g)/test of antibody that will stain a cell sample in a final volume of 100 μ L. Cell number should be determined empirically but can range from 10^5 to 10^8 cells/test.

References

Ortonne N, Huet D, Gaudez C, Marie-Cardine A, Schiavon V, Bagot M, Musette P, Bensussan A. Significance of circulating T-cell clones in Sezary syndrome. Blood. 2006 May 15;107(10):4030-8. (**IP26**, mAb characterization)

Related Products

17-4714 Mouse IgG1 K Isotype Control APC (P3.6.2.1)

Not for further distribution without written consent.

Copyright © 2000-2010 eBioscience, Inc.

Tel: 888.999.1371 or 858.642.2058 • Fax: 858.642.2046 • www.eBioscience.com • info@eBioscience.com