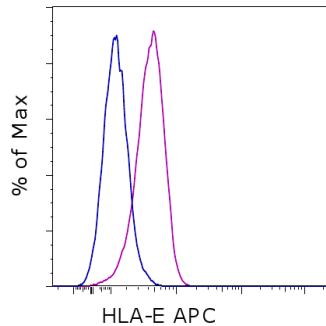


Anti-Human HLA-E APC

Catalog Number: 17-9953

RUO: For Research Use Only. Not for use in diagnostic procedures.



Staining of normal human peripheral blood cells with Mouse IgG1 kappa Isotype Control APC (cat. 17-4714) (blue histogram) or Anti-Human HLA-E APC (purple histogram). Cells in the lymphocyte gate were used for analysis.

Product Information

Contents: Anti-Human HLA-E APC
Catalog Number: 17-9953
Clone: 3D12HLA-E
Concentration: 5 μ L (0.5 μ g)/test
Host/Isotype: Mouse IgG1

Formulation: aqueous buffer, 0.09% sodium azide, may contain carrier protein/stabilizer
Temperature Limitation: Store at 2-8°C. Do not freeze. Light-sensitive material.



LOT



Batch Code: Refer to vial

Use By: Refer to vial

Description

The monoclonal antibody 3D12 (HLA-E) recognizes human HLA-E, a member of the Human Leukocyte Antigen family. HLA-E is a MHC Class IB member, which has a specialized role in NK cell recognition. Binding of a restricted set of peptides derived from other Class I leader sequences to the HLA-E and B2M (beta2 microglobulin) complex leads to interaction with NKG2A on NK cells. This binding protects the HLA-G-expressing cell from NK cell killing. HLA-E expression is ubiquitous.

Applications Reported

This 3D12HLA-E antibody has been reported for use in flow cytometric analysis.

Applications Tested

This 3D12HLA-E antibody has been pre-titrated and tested by flow cytometric analysis of normal human peripheral blood cells. This can be used at 5 μ L (0.5 μ g) per test. A test is defined as the amount (μ g) of antibody that will stain a cell sample in a final volume of 100 μ L. Cell number should be determined empirically but can range from 10^5 to 10^8 cells/test.

References

Wooden SL, Kalb SR, Cotter RJ, Soloski MJ. Cutting edge: HLA-E binds a peptide derived from the ATP-binding cassette transporter multidrug resistance-associated protein 7 and inhibits NK cell-mediated lysis. *J Immunol.* 2005 Aug 1;175(3):1383-7. (3D12 HLA-E, FC, PubMed)

Strong RK, Holmes MA, Li P, Braun L, Lee N, Geraghty DE. HLA-E allelic variants. Correlating differential expression, peptide affinities, crystal structures, and thermal stabilities. *J Biol Chem.* 2003 Feb 14;278(7):5082-90. Epub 2002 Oct 30. (3D12 HLA-E, FC, ELISA, PubMed)

Lee N, Llano M, Carretero M, Ishitani A, Navarro F, López-Botet M, Geraghty DE. HLA-E is a major ligand for the natural killer inhibitory receptor CD94/NKG2A. *Proc Natl Acad Sci U S A.* 1998 Apr 28;95(9):5199-204. (3D12 HLA-E, FC, FA, PubMed)

Not for further distribution without written consent.

Copyright © 2000-2012 eBioscience, Inc.

Tel: 888.999.1371 or 858.642.2058 • Fax: 858.642.2046 • www.ebioscience.com •
info@ebioscience.com

Anti-Human HLA-E APC

Catalog Number: 17-9953

RUO: For Research Use Only. Not for use in diagnostic procedures.

Related Products

17-4714 Mouse IgG1 K Isotype Control APC (P3.6.2.8.1)

Not for further distribution without written consent.

Copyright © 2000-2012 eBioscience, Inc.

Tel: 888.999.1371 or 858.642.2058 • Fax: 858.642.2046 • www.ebioscience.com •
info@ebioscience.com