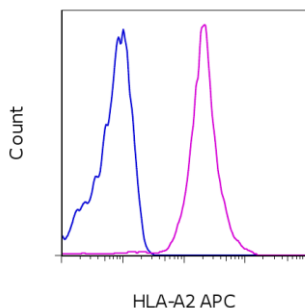


Anti-Human HLA-A2 APC

Catalog Number: 17-9876

RUO: For Research Use Only. Not for use in diagnostic procedures.



Staining of normal human peripheral blood cells with Mouse IgG2b K Isotype Control APC (cat. 17-4732) (blue histogram) or Anti-Human HLA-A2 APC (purple histogram). Cells in the lymphocyte gate were used for analysis.

Product Information

Contents: Anti-Human HLA-A2 APC
Catalog Number: 17-9876
Clone: BB7.2
Concentration: 5 uL (0.5 ug)/test
Host/Isotype: Mouse IgG2b

Formulation: aqueous buffer, 0.09% sodium azide, may contain carrier protein/stabilizer
Temperature Limitation: Store at 2-8°C. Do not freeze. Light-sensitive material.
Batch Code: Refer to vial



LOT



Use By: Refer to vial
Contains sodium azide

Description

This BB7.2 monoclonal antibody recognizes the human major histocompatibility complex (MHC) class I molecule HLA-A2, which is a member of the HLA-A family. MHC class I exists as a single alpha chain composed of three domains. This molecule associates with beta 2-microglobulin and is expressed on all nucleated cells.

The BB7.2 monoclonal antibody has been reported to exhibit blocking activity, as well as recognize HLA-A28.

Applications Reported

This BB7.2 antibody has been reported for use in flow cytometric analysis.

Applications Tested

This BB7.2 antibody has been pre-titrated and tested by flow cytometric analysis of normal human peripheral blood cells. This can be used at 5 uL (0.5 ug) per test. A test is defined as the amount (ug) of antibody that will stain a cell sample in a final volume of 100 uL. Cell number should be determined empirically but can range from 10^5 to 10^8 cells/test.

References

Lubben NB, Sahlender DA, Motley AM, Lehner PJ, Benaroch P, Robinson MS. HIV-1 Nef-induced down-regulation of MHC class I requires AP-1 and clathrin but not PACS-1 and is impeded by AP-2. *Mol Biol Cell*. 2007 Sep;18(9):3351-65. (**BB7.2**, FC)

Kasper MR, Roeth JF, Williams M, Filzen TM, Fleis RI, Collins KL. HIV-1 Nef disrupts antigen presentation early in the secretory pathway. *J Biol Chem*. 2005 Apr 1;280(13):12840-8. (**BB7.2**, IP)

Brossart P, Heinrich KS, Stuhler G, Behnke L, Reichardt VL, Stevanovic S, Muhm A, Rammensee HG, Kanz L, Brügger W. Identification of HLA-A2-restricted T-cell epitopes derived from the MUC1 tumor antigen for broadly applicable vaccine therapies. *Blood*. 1999 Jun 15;93(12):4309-17. (**BB7.2**, FA)

Parham P, Brodsky FM. Partial purification and some properties of BB7.2. A cytotoxic monoclonal antibody with

Not for further distribution without written consent.

Copyright © 2000-2012 eBioscience, Inc.

Tel: 888.999.1371 or 858.642.2058 • Fax: 858.642.2046 • www.ebioscience.com •
info@ebioscience.com

Anti-Human HLA-A2 APC

Catalog Number: 17-9876

RUO: For Research Use Only. Not for use in diagnostic procedures.

specificity for HLA-A2 and a variant of HLA-A28. Hum Immunol. 1981 Dec;3(4):277-99. (**BB7.2**, FA)

Related Products

00-4222 Flow Cytometry Staining Buffer
11-9881 Anti-Human HLA-DQ FITC (SK10)
11-9983 Anti-Human HLA-ABC FITC (W6/32)
12-5935 Anti-Human HLA-BC PE (B1.23.2)
17-4732 Mouse IgG2b K Isotype Control APC