

Purified anti-mouse CD335 (NKp46)

Catalog # / Size: 137601 / 50 µg
137602 / 500 µg

Clone: 29A1.4

Isotype: Rat IgG2a, κ

Immunogen: NKP46-IgG1 Fc fusion protein

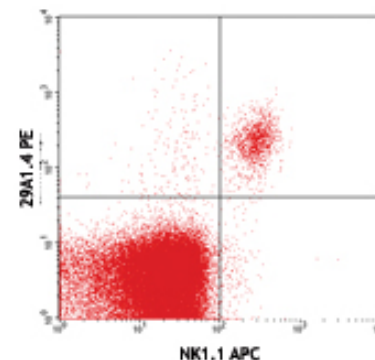
Reactivity: Mouse

Preparation: The antibody was purified by affinity chromatography.

Formulation: Phosphate-buffered solution, pH 7.2, containing 0.09% sodium azide.

Concentration: 0.5 mg/ml

Storage: The antibody solution should be stored undiluted at 4°C.



C57BL/6 mouse splenocytes stained with purified 29A1.4 conjugated with PE and NK1.1 (PK136) APC

Applications:

Applications: FC - *Quality tested*
IHC - *Reported in the literature*

Recommended Usage: Each lot of this antibody is quality control tested by immunofluorescent staining with flow cytometric analysis. For immunofluorescent staining, the suggested use of this reagent is ≤0.25 µg per million cells in 100 µl volume. It is recommended that the reagent be titrated for optimal performance for each application.

Application Notes: Additional reported applications (for the relevant formats) include: immunohistochemical staining of frozen tissue sections^{1,2} and *in vitro* activation of NK cells¹.

Application References: 1. Walzer T, *et al.* 2007. *P. Natl. Acad. Sci. USA* 104:3384. (IHC, Activ)
2. Walzer T, *et al.* 2007. *Nat. Immunol.* 8:1337. (IHC)
3. Guerriero JL, *et al.* 2011. *J. Immunol.* 186:3517. PubMed

Description: CD335, also known as NKp46, is a single-pass type I membrane protein of 46 kD. It belongs to the natural cytotoxicity receptor (NCR) family and contains two Ig-like (immunoglobulin-like) domains. Its expression is restricted to NK cells and a subset of NK-like T cells; it's not expressed in CD1d-restricted NKT cells. CD335 is a receptor for viral hemagglutinins and heparan sulfate proteoglycans and is involved in NK cell activation.

Antigen References: 1. Colucci F and Cilio CM. 2010. *Nat. Immunol.* 125:60.
2. Caligiuri MA. 2008. *Blood* 112:461.
3. Colonna M. 2009. *Immunity* 31:15.

Related Products: **Product**

Purified Rat IgG2a, κ Isotype Ctrl
Cell Staining Buffer
RBC Lysis Buffer (10X)

Clone

RTK2758

Application

FC, ICC, IF, IHC, IP, WB
FC, ICC, ICFC
FC, ICFC



For research use only. Not for diagnostic use. Not for resale. BioLegend will not be held responsible for patent infringement or other violations that may occur with the use of our products.



*These products may be covered by one or more Limited Use Label Licenses (see the BioLegend Catalog or our website, www.biolegend.com/ordering#license). BioLegend products may not be transferred to third parties, resold, modified for resale, or used to manufacture commercial products, reverse engineer functionally similar materials, or to provide a service to third parties without written approval of BioLegend. By use of these products you accept the terms and conditions of all applicable Limited Use Label Licenses. Unless otherwise indicated, these products are for research use only and are not intended for human or animal diagnostic, therapeutic or commercial use.