

# Product Data Sheet

## PE anti-mouse BTNL2

**Catalog # / Size:** 130407 / 50 µg  
130408 / 200 µg

**Clone:** 3-6H2

**Isotype:** Rat IgG2a, κ

**Immunogen:** Recombinant BTNL2

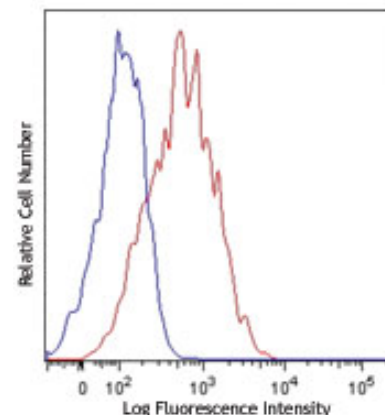
**Reactivity:** Mouse

**Preparation:** The antibody was purified by affinity chromatography, and conjugated with PE under optimal conditions. The solution is free of unconjugated PE and unconjugated antibody.

**Formulation:** Phosphate-buffered solution, pH 7.2, containing 0.09% sodium azide.

**Concentration:** 0.2 mg/ml

**Storage:** The antibody solution should be stored undiluted at 4°C and protected from prolonged exposure to light. **Do not freeze.**



BTNL2 transfected P3U1 cells were stained with BTNL2 (clone 3-6H2) PE (red line) or rat IgG2a, κ isotype control (blue line).

## Applications:

**Applications:** FC - Quality tested

**Recommended Usage:** Each lot of this antibody is quality control tested by immunofluorescent staining with flow cytometric analysis. For immunofluorescent staining, the suggested use of this reagent is ≤0.25 µg per million cells in 100 µl volume. It is recommended that the reagent be titrated for optimal performance for each application.

**Description:** BTNL2 is a member of butyrophilin family located in the MHC locus. Structurally it is homologous to the B7 series of costimulatory molecules. Recent studies have shown that BTNL2 is associated with incidence of autoimmune diseases, including sarcoidosis and mycositis. Preliminary data showed that it is implicated in the T cell activation and regulation.

**Antigen References:** 1. Nguyen T, *et al.* 2006. *J. Immunol.* 176:7354.  
2. Arnett HA, *et al.* 2007. *J. Immunol.* 178:1523.

### Related Products:

Product  
PE Rat IgG2a, κ Isotype Ctrl  
Cell Staining Buffer  
RBC Lysis Buffer (10X)  
TruStain fcX™ (anti-mouse CD16/32)

Clone  
RTK2758

93

Application  
FC, ICFC  
FC, ICC, ICFC  
FC, ICFC  
FC



For research use only. Not for diagnostic use. Not for resale. BioLegend will not be held responsible for patent infringement or other violations that may occur with the use of our products.



\*These products may be covered by one or more Limited Use Label Licenses (see the BioLegend Catalog or our website, [www.biollegend.com/ordering#license](http://www.biollegend.com/ordering#license)). BioLegend products may not be transferred to third parties, resold, modified for resale, or used to manufacture commercial products, reverse engineer functionally similar materials, or to provide a service to third parties without written approval of BioLegend. By use of these products you accept the terms and conditions of all applicable Limited Use Label Licenses. Unless otherwise indicated, these products are for research use only and are not intended for human or animal diagnostic, therapeutic or commercial use.