

PE anti-mouse DLL1

Catalog # / Size: 128307 / 50 µg
128308 / 200 µg

Clone: HMD1-3

Isotype: Armenian Hamster IgG

Immunogen: CHO cells expressing murine Dll 1

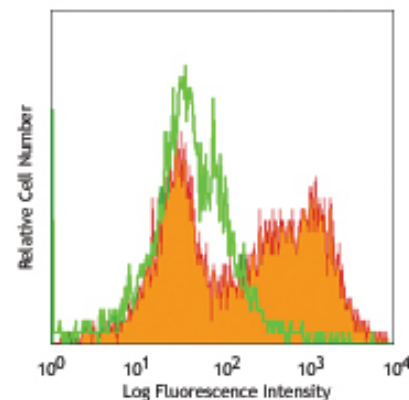
Reactivity: Mouse

Preparation: The antibody was purified by affinity chromatography, and conjugated with PE under optimal conditions. The solution is free of unconjugated PE and unconjugated antibody.

Formulation: Phosphate-buffered solution, pH 7.2, containing 0.09% sodium azide.

Concentration: 0.2 mg/ml

Storage: The antibody solution should be stored undiluted at 4°C and protected from prolonged exposure to light. **Do not freeze.**



LPS-stimulated BALB/c peritoneal macrophages (Day 2) stained with HMD1-3 PE

Applications:

Applications: FC - Quality tested

Recommended Usage: Each lot of this antibody is quality control tested by immunofluorescent staining with flow cytometric analysis. For immunofluorescent staining, the suggested use of this reagent is ≤ 1.0 µg/test for FC. It is recommended that the reagent be titrated for optimal performance for each application.

Application References: 1. Moriyama Y, *et al.* 2008. *Int. Immunol.* 20:763.
2. Degaki KY, *et al.* 2012. *PLoS One.* 7:e52037. PubMed.

Description: The Notch receptors and their ligands are highly conserved from invertebrates to mammals. The Delta-like 1 (DLL1) is one of the four or five Notch ligands identified. The binding to Notch receptor results in the proteolysis of Notch and movement of intracellular portion of Notch into the nucleus. This translocation triggers a series of signaling process. Delta-like 1 is reported to be essential for the maintenance of marginal zone B cells in normal mice, and engagement of Notch 1 by DLL1 promotes differentiation of B lymphocytes to antibody-secreting cells.

Antigen References: 1. Ehebauer MT, *et al.* 2006. *Biochem. J.* 392:13.
2. Shimizu K, *et al.* 2000. *Mol. Cell. Biology* 20:18.
3. Parks AL, *et al.* 2006. *Genetics* 174:1947.
4. Santos MA, *et al.* 2007. *P. Natl. Acad. Sci. USA* 104:15454.

| Related Products: | Product | Clone | Application |
|-------------------|--------------------------------------|--------|---------------|
| | Cell Staining Buffer | | FC, ICC, ICFC |
| | RBC Lysis Buffer (10X) | | FC, ICFC |
| | PE Armenian Hamster IgG Isotype Ctrl | HTK888 | FC, ICFC |
| | TruStain fcX™ (anti-mouse CD16/32) | 93 | FC |



For research use only. Not for diagnostic use. Not for resale. BioLegend will not be held responsible for patent infringement or other violations that may occur with the use of our products.



*These products may be covered by one or more Limited Use Label Licenses (see the BioLegend Catalog or our website, www.biolegend.com/ordering#license). BioLegend products may not be transferred to third parties, resold, modified for resale, or used to manufacture commercial products, reverse engineer functionally similar materials, or to provide a service to third parties without written approval of BioLegend. By use of these products you accept the terms and conditions of all applicable Limited Use Label Licenses. Unless otherwise indicated, these products are for research use only and are not intended for human or animal diagnostic, therapeutic or commercial use.