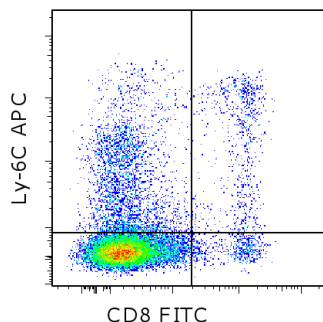


Anti-Mouse Ly-6C APC

Catalog Number: 17-5932

RUO: For Research Use Only. Not for use in diagnostic procedures.



Staining of BALB/c splenocytes with Anti-Mouse CD8a FITC (cat. 11-0081) and 0.06 ug of Anti-Mouse Ly-6C APC. Total viable cells were used for analysis.

Product Information



Contents: Anti-Mouse Ly-6C APC

Catalog Number: 17-5932

Clone: HK1.4

Concentration: 0.2 mg/mL

Host/Isotype: Rat IgG2c, kappa



Formulation: aqueous buffer, 0.09% sodium azide, may contain carrier protein/stabilizer

Temperature Limitation: Store at 2-8°C. Do not freeze. Light sensitive material.

Batch Code: Refer to vial



Use By: Refer to vial

Description

The monoclonal antibody HK1.4 recognizes mouse Ly-6C, a GPI-linked protein of the Ly6 family. Ly-6C is found on monocytes/macrophages, endothelial cells and granulocytes as well as a subset of lymphocytes. Some variation of expression is found on different mouse strains in regards to expression on CD4 and CD8 lymphocytes. These correlate to 2 alleles both of which are recognized by HK1.4: Ly6c.1 found on C57Bl/6 and SJL cells which results in staining of both CD4 and CD8 cells while Ly6-C.2 found on BALB/c and 3H/He results in staining of CD8, but not CD4 cells.

In vitro addition of HK1.4 antibody can increase proliferation and stimulate cytokine release.

Applications Reported

This HK1.4 antibody has been reported for use in flow cytometric analysis.

Applications Tested

This HK1.4 antibody has been tested by flow cytometric analysis of mouse splenocytes. This can be used at less than or equal to 0.125 µg per test. A test is defined as the amount (µg) of antibody that will stain a cell sample in a final volume of 100 µL. Cell number should be determined empirically but can range from 10⁵ to 10⁸ cells/test. It is recommended that the antibody be carefully titrated for optimal performance in the assay of interest.

References

Pflugh DL, Maher SE, Bothwell AL. Ly-6 superfamily members Ly-6A/E, Ly-6C, and Ly-6I recognize two potential ligands expressed by B lymphocytes. J Immunol. 2002 Nov 1;169(9):5130-6. (**HK1.4**, FC PubMed)

Havran WL, Lancki DW, Moldwin RL, Dialynas DP, Fitch FW. Characterization of an anti-Ly-6 monoclonal antibody which defines and activates cytolytic T lymphocytes. J Immunol. 1988 Feb 15;140(4):1034-42. (**HK1.4**, FC, FA PubMed)

Related Products

11-0041 Anti-Mouse CD4 FITC (GK1.5)

Not for further distribution without written consent.

Copyright © 2000-2012 eBioscience, Inc.

Tel: 888.999.1371 or 858.642.2058 • Fax: 858.642.2046 • www.ebioscience.com •
info@ebioscience.com

Anti-Mouse Ly-6C APC

Catalog Number: 17-5932

RUO: For Research Use Only. Not for use in diagnostic procedures.

11-0081 Anti-Mouse CD8a FITC (53-6.7)

Not for further distribution without written consent.

Copyright © 2000-2012 eBioscience, Inc.

Tel: 888.999.1371 or 858.642.2058 • Fax: 858.642.2046 • www.ebioscience.com •
info@ebioscience.com