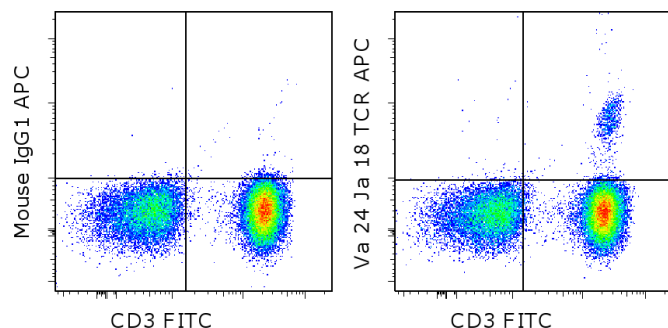


Anti-Human V alpha 24 J alpha 18 TCR APC

Catalog Number: 17-5806

RUO: For Research Use Only. Not for use in diagnostic procedures.



Staining of normal human peripheral blood cells with Anti-Human CD3 FITC (cat. 11-0037) and Mouse IgG1 K Isotype Control APC (cat. 17-4714) (left) or Anti-Human V alpha 24 J alpha 18 TCR APC (right). Cells in the lymphocyte gate were used for analysis.

Product Information

Contents: Anti-Human V alpha 24 J alpha 18 TCR APC



Catalog Number: 17-5806

Clone: 6B11

Concentration: 5 uL (0.5 ug/test)

Host/Isotype: Mouse IgG1, kappa



Formulation: aqueous buffer, 0.09% sodium azide, may contain carrier protein/stabilizer

Temperature Limitation: Store at 2-8°C. Do not freeze. Light-sensitive material.



Batch Code: Refer to vial



Use By: Refer to vial

Description

The 6B11 monoclonal antibody reacts with an epitope of the CDR3 formed by the germ-line configuration of the V alpha 24 and J alpha 18 of the TCR alpha locus, which results in the expression of an invariant T-cell receptor (TCR) expressed by invariant NK T cells (iNKT). This TCR is homologous to the murine V alpha 14 J alpha 18. This TCR alpha chain pairs with a restricted set of rearranged TCR beta chains, with V beta 11 being the most prominent in humans. NK T cells are restricted by the CD1d molecule and are activated by a CD1d-presented glycolipid ligand, which results in the rapid production of IL-4, IL-13 and IFN gamma. Although iNKT cells have NK-like cytolytic activity, they are considered regulators of immune responses because they rapidly produce large amounts of both Th1 and Th2 cytokines in autoimmune disease, infectious disease, and cancer. The number of iNKT cells present in peripheral blood of normal humans shows considerable variability ranging from 0.01-1% of total peripheral T cells.

Applications Reported

This 6B11 antibody has been reported for use in flow cytometric analysis.

Applications Tested

This 6B11 antibody has been pre-titrated and tested by flow cytometric analysis of normal human peripheral blood cells. This can be used at 5 µL (0.5 µg) per test. A test is defined as the amount (µg) of antibody that will stain a cell sample in a final volume of 100 µL. Cell number should be determined empirically but can range from 10⁵ to 10⁸ cells/test.

References

Montoya CJ, Pollard D, Martinson J, Kumari K, Wasserfall C, Mulder CB, Rugeles MT, Atkinson MA, Landay AL, Wilson SB. Characterization of human invariant natural killer T subsets in health and disease using a novel invariant natural killer T cell-clonotypic monoclonal antibody, 6B11. *Immunology*. 2007 Sep;122(1):1-14. (6B11, mAb characterization, PubMed)

Thomas SY, Hou R, Boyson JE, Means TK, Hess C, Olson DP, Strominger JL, Brenner MB, Gumperz JE, Wilson SB, Luster AD. CD1d-restricted NKT cells express a chemokine receptor profile indicative of Th1-type inflammatory homing cells. *J Immunol*. 2003 Sep 1;171(5):2571-80. (6B11, FC, PubMed)

Not for further distribution without written consent.

Copyright © 2000-2012 eBioscience, Inc.

Tel: 888.999.1371 or 858.642.2058 • Fax: 858.642.2046 • www.ebioscience.com • info@ebioscience.com

Anti-Human V alpha 24 J alpha 18 TCR APC

Catalog Number: 17-5806

RUO: For Research Use Only. Not for use in diagnostic procedures.

Illés Z, Kondo T, Newcombe J, Oka N, Tabira T, Yamamura T. Differential expression of NK T cell V alpha 24J alpha Q invariant TCR chain in the lesions of multiple sclerosis and chronic inflammatory demyelinating polyneuropathy. J Immunol. 2000 Apr 15;164(8):4375-81.

Related Products

11-0037 Anti-Human CD3 FITC (OKT3)

17-4714 Mouse IgG1 K Isotype Control APC (P3.6.2.8.1)