

PE anti-mouse CD279 (PD-1)

Catalog # / Size: 135205 / 50 µg
135206 / 200 µg

Clone: 29F.1A12

Isotype: Rat IgG2a, κ

Immunogen: PD-1 cDNA followed by PD-1-Ig fusion protein

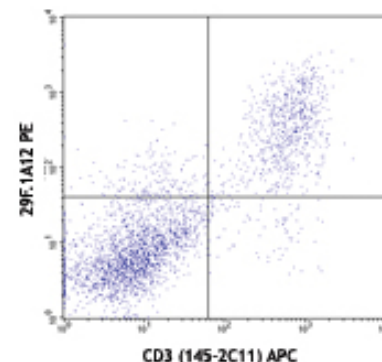
Reactivity: Mouse

Preparation: The antibody was purified by affinity chromatography, and conjugated with PE under optimal conditions. The solution is free of unconjugated PE and unconjugated antibody.

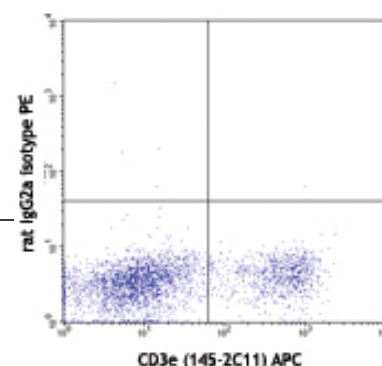
Formulation: Phosphate-buffered solution, pH 7.2, containing 0.09% sodium azide.

Concentration: 0.2 mg/ml

Storage: The antibody solution should be stored undiluted at 4°C and protected from prolonged exposure to light. **Do not freeze.**



Con A-stimulated (3 days) C57BL/6 splenocytes stained with 29F.1A12 PE and CD3 (145-2C11) APC



Con A stimulated (3 days) C57BL/6 splenocytes stained with rat IgG2a isotype PE and CD3e (145-2C11) APC

Applications:

Applications: FC - Quality tested

Recommended Usage: Each lot of this antibody is quality control tested by immunofluorescent staining with flow cytometric analysis. For immunofluorescent staining, the suggested use of this reagent is ≤1.0 µg per million cells in 100 µl volume. It is recommended that the reagent be titrated for optimal performance for each application.

Application References: 1. Good-Jacobson KL, *et al.* 2010. *Nat. Immunol.* 11:535. (FC) PubMed
2. Spitsin S, *et al.* 2012. *Clin Vaccine Immunol.* 19:752. PubMed.

Description: CD279, known as programmed death-1 (PD-1), is a 50-55 kD glycoprotein and belongs to the CD28 family of the Ig superfamily. PD-1 is expressed on activated splenic T, B lymphocytes, and thymocytes. It is induced on activated myeloid cells as well. PD-1 is involved in lymphocyte clonal selection and peripheral tolerance through binding its ligands, B7-H1 (PD-L1) and B7-DC (PD-L2). It was reported that PD-1 and PD-L1 interactions are critical to positive selection and play a role in shaping the T cell repertoire. PD-L1 negative costimulation is essential for prolonged survival of intratesticular islet allografts.

Antigen References: 1. Nishimura H, *et al.* 2001. *Science* 291:319
2. Agata Y, *et al.* 1996. *Int. Immunol.* 8:765
3. Liang SC, *et al.* 2003. *Eur. J. Immunol.* 33:2706
4. Barber DL, *et al.* 2006. *Nature* 439:682
5. Keir ME, *et al.* 2005. *J. Immunol.* 175:7372
6. Koehn BH, *et al.* 2008. *J Immunol.* 181:5313

Related Products:

Product	Clone	Application
PE Rat IgG2a, κ Isotype Ctrl	RTK2758	FC, ICFC
Cell Staining Buffer		FC, ICC, ICFC
RBC Lysis Buffer (10X)		FC, ICFC
TruStain fcX™ (anti-mouse CD16/32)	93	FC



For research use only. Not for diagnostic use. Not for resale. BioLegend will not be held responsible for patent infringement or other violations that may occur with the use of our products.



*These products may be covered by one or more Limited Use Label Licenses (see the BioLegend Catalog or our website, www.biolegend.com/ordering#license). BioLegend products may not be transferred to third parties, resold, modified for resale, or used to manufacture commercial products, reverse engineer functionally similar materials, or to provide a service to third parties without written approval of BioLegend. By use of these products you accept the terms and conditions of all applicable Limited Use Label Licenses. Unless otherwise indicated, these products are for research use only and are not intended for human or animal diagnostic, therapeutic or commercial use.