

## Pacific Blue™ anti-mouse CD317 (BST2, PDCA-1)

**Catalog # / Size:** 127017 / 25 µg  
127018 / 100 µg

**Clone:** 927

**Isotype:** Rat IgG2b, κ

**Immunogen:** Mouse plasmacytoid dendritic cells (DCs)

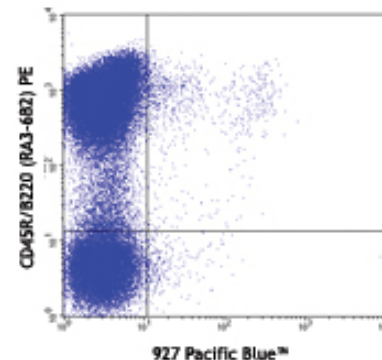
**Reactivity:** Mouse

**Preparation:** The antibody was purified by affinity chromatography, and conjugated with Pacific Blue™ under optimal conditions. The solution is free of unconjugated Pacific Blue™.

**Formulation:** Phosphate-buffered solution, pH 7.2, containing 0.09% sodium azide.

**Concentration:** 0.5 mg/ml

**Storage:** The antibody solution should be stored undiluted at 4°C and protected from prolonged exposure to light. **Do not freeze.**



C57BL/6 splenocytes stained with 927 Pacific Blue™ and CD45R/B220 (RA3-6B2) PE

## Applications:

**Applications:** FC - Quality tested  
IF - Reported in the literature

**Recommended Usage:** Each lot of this antibody is quality control tested by immunofluorescent staining with flow cytometric analysis. For immunofluorescent staining, the suggested use of this reagent is ≤ 0.25 µg per 10<sup>6</sup> cells in 100 µl volume or 100 µl of whole blood. It is recommended that the reagent be titrated for optimal performance for each application.

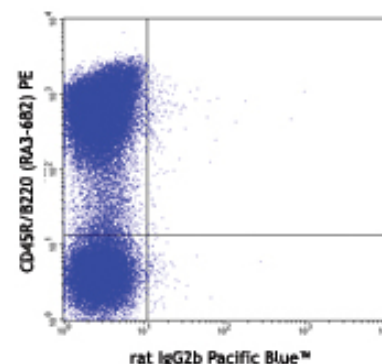
\* Pacific Blue™ has a maximum emission of 455 nm when it is excited at 405 nm. Prior to using Pacific Blue™ conjugate for flow cytometric analysis, please verify your flow cytometer's capability of exciting and detecting the fluorochrome.

\*\* Pacific Blue™ is a registered trademark of Molecular Probes, Inc. Pacific Blue™ dye antibody conjugates are sold under license from Molecular Probes, Inc. for research use only, except for use in combination with microarrays and high content screening, and are covered by pending and issued patents.

**Application Notes:** Additional reported applications (for the relevant formats) include: immunofluorescence microscopy, functional assay<sup>2</sup>, and depletion<sup>3,4</sup>. The LEAF™ purified antibody (Endotoxin <0.1 EU/µg, Azide-Free, 0.2 µm filtered) is recommended for functional assays.

**Application References:**

- Blasius AL, *et al.* 2006. *J. Immunol.* 177:3260.
- Schliemann C, *et al.* 2010. *Blood* 115:736. (FA, IF)
- Rajagopal D, *et al.* 2010. *Blood* 115:1949. (Depletion)
- Moniz RJ, *et al.* 2010. *FEMS Immunol. Med. Microbiol.* 58:397. (Depletion)



C57BL/6 splenocytes stained with rat IgG2b Pacific Blue™ isotype control and CD45R/B220 (RA3-6B2) PE

**Description:** CD317, known as BST2, tetherin, HM1.2 antigen, bone marrow stromal antigen 2, or PDCA-1, is type II transmembrane glycoprotein with a molecular mass of 29-33 kD. It is predominantly expressed on Type I IFN-producing cells (IPCs) in naive mice, but is up-regulated on most cell types following stimulation with type I IFNs and IFN-gamma. It is highly expressed on terminally differentiated normal plasmacytoid dendritic cells and some tumor cells, such as multiple myeloma, renal cell carcinoma, and melanoma cells. BST2 is a recently identified, IFN-induced cellular response factor that blocks release of HIV-1 and other retroviruses from infected cells. BST2 has been found to be the natural ligand of ILT7 in human model.

**Antigen References:**

- Douglas JL. *et al.* 2009. *J. Virol.* 83(16):7931
- Cao W *et al.* 2009. *J. Exp. Med.* 206(7):1603
- Neil SJ. *et al.* 2008. *Nature* 451:425

Related Products:	Product	Clone	Application
	Pacific Blue™ Rat IgG2b, κ Isotype Ctrl	RTK4530	FC, ICFC
	Cell Staining Buffer		FC, ICC, ICFC
	RBC Lysis Buffer (10X)		FC, ICFC
	TruStain fcX™ (anti-mouse CD16/32)	93	FC



For research use only. Not for diagnostic use. Not for resale. BioLegend will not be held responsible for patent infringement or other violations that may occur with the use of our products.



\*These products may be covered by one or more Limited Use Label Licenses (see the BioLegend Catalog or our website, [www.biollegend.com/ordering#license](http://www.biollegend.com/ordering#license)). BioLegend products may not be transferred to third parties, resold, modified for resale, or used to manufacture commercial products, reverse engineer functionally similar materials, or to provide a service to third parties without written approval of BioLegend. By use of these products you accept the terms and conditions of all applicable Limited Use Label Licenses. Unless otherwise indicated, these products are for research use only and are not intended for human or animal diagnostic, therapeutic or commercial use.