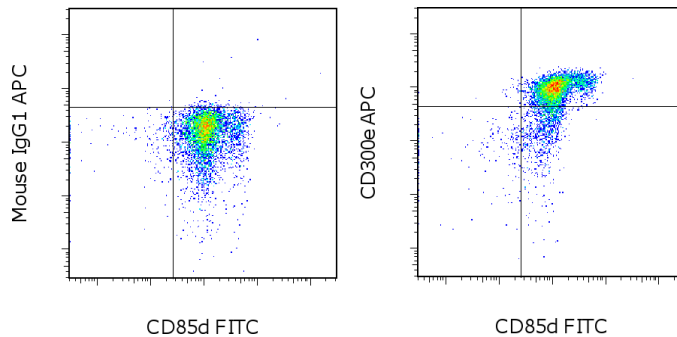


## Anti-Human CD300e (IREM-2) APC

**Catalog Number:** 17-3007

**Also known as:** IREM2, CLM-2

**RUO: For Research Use Only. Not for use in diagnostic procedures.**



Staining of normal human peripheral blood cells with Anti-Human CD85d (ILT4) FITC (cat. 11-5148) and Mouse IgG1 K Isotype Control APC (cat. 17-4714) (left) or Anti-Human CD300e (IREM-2) APC (right). Cells in the monocyte gate were used for analysis.

### Product Information

**Contents:** Anti-Human CD300e (IREM-2) APC

**REF** **Catalog Number:** 17-3007

**Clone:** UP-H2

**Concentration:** 5  $\mu$ L (0.25  $\mu$ g)/test

**Host/Isotype:** Mouse IgG1

**Formulation:** aqueous buffer, 0.09% sodium azide, may contain carrier protein/stabilizer

**Temperature Limitation:** Store at 2-8°C. Do not freeze. Light-sensitive material.

**Batch Code:** Refer to vial

**Use By:** Refer to vial

**Contains sodium azide**



### Description

The UP-H2 monoclonal antibody recognizes human IREM-2 (immune receptor expressed in monocytic derived cells) also known as LMIR6, and unofficially CD300E and CD300LE. It is a member of the CMRF-35 family. This 34 kDa Ig-like containing receptor is an activating receptor and through its charged residues in the cytoplasmic domain interacts with ITAM containing adaptor proteins like DAP12. Expression is found exclusively on monocytes and myeloid DC's. Expression may be transient as differentiation of monocytes leads to down regulation of IREM-2 yet expression is found on mature DCs. It has been also noted that myeloid cell lines such as THP-1 and U937 do not express IREM-2.

In vitro addition of UP-H2 antibody either soluble or crosslinked stimulates monocytes.

### Applications Reported

This UP-H2 antibody has been reported for use in flow cytometric analysis.

### Applications Tested

This UP-H2 antibody has been pre-titrated and tested by flow cytometric analysis of normal human peripheral blood cells. This can be used at 5  $\mu$ L (0.25  $\mu$ g) per test. A test is defined as the amount ( $\mu$ g) of antibody that will stain a cell sample in a final volume of 100  $\mu$ L. Cell number should be determined empirically but can range from  $10^5$  to  $10^8$  cells/test.

### References

Alvarez-Errico D, Aguilar H, Kitzig F, Brckalo T, Sayós J, López-Botet M. IREM-1 is a novel inhibitory receptor expressed by myeloid cells. *Eur J Immunol.* 2004 Dec;34(12):3690-701.

Aguilar H, Alvarez-Errico D, García-Montero AC, Orfao A, Sayós J, López-Botet M. Molecular characterization of a novel immune receptor restricted to the monocytic lineage. *J Immunol.* 2004 Dec 1;173(11):6703-11. (UP-H2, FC, IP, WB PubMed)

### Related Products

Not for further distribution without written consent.

Copyright © 2000-2012 eBioscience, Inc.

Tel: 888.999.1371 or 858.642.2058 • Fax: 858.642.2046 • [www.ebioscience.com](http://www.ebioscience.com) • [info@ebioscience.com](mailto:info@ebioscience.com)

---

## Anti-Human CD300e (IREM-2) APC

**Catalog Number:** 17-3007

**Also known as:** IREM2, CLM-2

**RUO: For Research Use Only. Not for use in diagnostic procedures.**

---

00-4222 Flow Cytometry Staining Buffer

11-5148 Anti-Human CD85d (ILT4) FITC (27D6)

17-4714 Mouse IgG1 K Isotype Control APC (P3.6.2.8.1)

---

Not for further distribution without written consent.

Copyright © 2000-2012 eBioscience, Inc.

Tel: 888.999.1371 or 858.642.2058 • Fax: 858.642.2046 • [www.ebioscience.com](http://www.ebioscience.com) •  
[info@ebioscience.com](mailto:info@ebioscience.com)