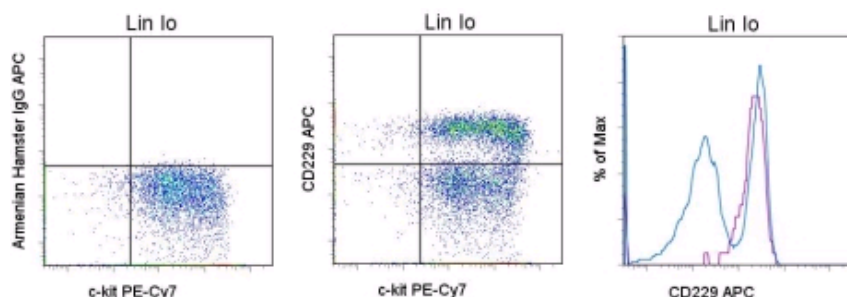


## Anti-Mouse CD229 (Ly-9) APC

Catalog Number: 17-2291

Also Known As: Ly9, SLAMF3

RUO: For Research Use Only



Staining of C57BL/6 bone marrow cells with mouse hematopoietic lineage (Lin) markers, Anti-Mouse CD117 (c-Kit) PE-Cy7 (cat. 25-1171), Anti-Mouse Ly-6A/E (Sca-1) PE (cat. 12-5981), and either 0.125 µg of Armenian Hamster IgG Isotype Control APC (cat. 17-4888) (left) or 0.125 µg of Anti-Mouse CD229 (Ly-9) APC (middle). The histogram on the right displays staining of Lin<sup>lo</sup>c-Kit<sup>+</sup> cells (blue histogram) versus Lin<sup>lo</sup>Sca-1<sup>+</sup>c-Kit<sup>+</sup> cells (purple histogram). Cells in the Lin<sup>lo</sup> gate were used for analysis.

### Product Information

Contents: Anti-Mouse CD229 (Ly-9) APC


**REF** Catalog Number: 17-2291

Clone: Ly9ab3

Concentration: 0.2 mg/ml


Host/Isotype: Armenian Hamster IgG

Formulation: aqueous buffer, 0.09% sodium azide, may contain carrier protein/stabilizer

 Temperature Limitation: Store at 2-8°C. Do not freeze. Light sensitive material.

**LOT** Batch Code: Refer to Vial

 Use By: Refer to Vial

 Caution, contains Azide

### Description

This Ly9ab3 monoclonal antibody reacts with mouse CD229 (also known as Ly9), an approximately 120-kDa member of the Signaling Lymphocyte Activation Molecule (SLAM) immunoglobulin superfamily. This type I transmembrane glycoprotein is expressed on a variety of immune cell types, including thymocytes, hematopoietic stem cells, macrophages, T and B lymphocytes, regulatory T cells, and natural killer cells. CD229 has been shown to interact with the adaptor proteins SLAM-associated protein (SAP) and EAT-2. This antibody recognizes both Ly9 alleles, Ly9.1 and Ly9.2.

### Applications Reported

This Ly9ab3 antibody has been reported for use in flow cytometric analysis.

### Applications Tested

This Ly9ab3 antibody has been tested by flow cytometric analysis on C57BL/6 bone marrow cells. This can be used at less than or equal to 0.25 µg per test. A test is defined as the amount (µg) of antibody that will stain a cell sample in a final volume of 100 µL. Cell number should be determined empirically but can range from 10<sup>5</sup> to 10<sup>8</sup> cells/test. It is recommended that the antibody be carefully titrated for optimal performance in the assay of interest.

### References

Sintes J, Romero X, Marin P, Terhorst C, Engel P. Differential expression of CD150 (SLAM) family receptors by human hematopoietic stem and progenitor cells. 2008 Sep; 36(9): 1199-204.

Sintes J, Vidal-Laliena M, Romero X, Tovar V, Engel P. Characterization of mouse CD229 (Ly9), a leukocyte cell surface molecule of the CD150 family. Tissue Antigens. 2007 Nov; 70(5): 355-62. (Ly9ab3, FC, Pubmed)

Graham DB, Bell MP, McCausland MM, Huntoon CJ, van Deursen J, Faubion WA, Crotty S, McKean DJ. (CD229)-deficient mice exhibit T cells defects yet do not share several phenotypic characteristics associated with SLAM- and SAP-deficient mice. J. Immunol. 2006 Jan 1; 176(1): 291-300.

### Related Products

12-5981 Anti-Mouse Ly-6A/E (Sca-1) PE (D7)

17-4888 Armenian Hamster IgG Isotype Control APC (eBio299Arm)

25-1171 Anti-Mouse CD117 (c-Kit) PE-Cy7 (2B8)

---

Not for further distribution without written consent.

Copyright © 2000-2010 eBioscience, Inc.

Tel: 888.999.1371 or 858.642.2058 • Fax: 858.642.2046 • [www.eBioscience.com](http://www.eBioscience.com) • [info@eBioscience.com](mailto:info@eBioscience.com)