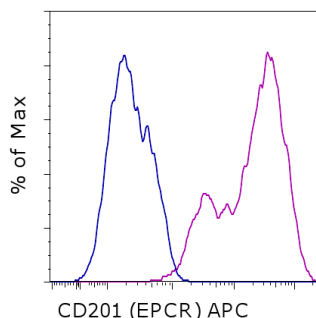


Anti-Mouse CD201 (EPCR) APC

Catalog Number: 17-2012

Also known as: Endothelial Protein C Receptor

RUO: For Research Use Only. Not for use in diagnostic procedures.



Staining of bEND.3 cells with 0.25 ug of Rat IgG2b kappa Isotype Control APC (cat. 17-4031) (blue histogram) or 0.25 ug of Anti-Mouse CD201 (EPCR) APC (purple histogram). Total viable cells were used for analysis.

Product Information



Contents: Anti-Mouse CD201 (EPCR) APC

Catalog Number: 17-2012

Clone: eBio1560 (1560)

Concentration: 0.2 mg/mL

Host/Isotype: Rat IgG2b, kappa



Formulation: aqueous buffer, 0.09% sodium azide, may contain carrier protein/stabilizer

Temperature Limitation: Store at 2-8°C. Do not freeze. Light-sensitive material.

Batch Code: Refer to vial

Use By: Refer to vial

Description

The eBio1560 monoclonal antibody reacts with mouse Endothelial Protein C Receptor (EPCR, CD201), a 25 kDa Type 1 transmembrane protein expressed on endothelial cells. EPCR exhibits sequence and structural homology with the MHC class I/CD1 family of proteins. EPCR is a ligand for Protein C and plays an important role in augmenting Protein C activation by the thrombin-thrombomodulin complex and in regulating blood coagulation and inflammation. Deletion of EPCR results in embryonic lethality, at least partially due to placental thrombosis.

Recently, it was demonstrated that EPCR expression identified cells in the bone marrow that are capable of hematopoietic reconstitution activity comparable to hematopoietic stem cells isolated with conventional methods. The eBio1560 monoclonal antibody can be used for the detection of these hematopoietic stem cells, however the eBiomRCR-16 monoclonal antibody should only be used for the detection of CD201 on endothelial cells.

Applications Reported

This eBio1560 (1560) antibody has been reported for use in flow cytometric analysis.

Applications Tested

This eBio1560 (1560) antibody has been tested by flow cytometric analysis of bEND.3 cells. This can be used at less than or equal to 0.5 µg per test. A test is defined as the amount (µg) of antibody that will stain a cell sample in a final volume of 100 µL. Cell number should be determined empirically but can range from 10⁵ to 10⁸ cells/test. It is recommended that the antibody be carefully titrated for optimal performance in the assay of interest.

References

Balazs AB, Fabian AJ, Esmon CT, Mulligan RC. Endothelial protein C receptor (CD201) explicitly identifies hematopoietic stem cells in murine bone marrow. *Blood*. 2006 Mar 15;107(6):2317-21. Epub 2005 Nov 22. (1560, FC, FA, PubMed)

Fukudome K, Esmon CT. Molecular cloning and expression of murine and bovine endothelial cell protein C/activated protein C receptor (EPCR). The structural and functional conservation in human, bovine, and murine EPCR. *J Biol*

Not for further distribution without written consent.

Copyright © 2000-2012 eBioscience, Inc.

Tel: 888.999.1371 or 858.642.2058 • Fax: 858.642.2046 • www.ebioscience.com •
info@ebioscience.com

Anti-Mouse CD201 (EPCR) APC

Catalog Number: 17-2012

Also known as: Endothelial Protein C Receptor

RUO: For Research Use Only. Not for use in diagnostic procedures.

Chem. 1995 Mar 10;270(10):5571-7.

Li W, Zheng X, Gu JM, Ferrell GL, Brady M, Esmon NL, Esmon CT. Extraembryonic expression of EPCR is essential for embryonic viability. Blood. 2005 Oct 15;106(8):2716-22.

Related Products

17-4031 Rat IgG2b K Isotype Control APC