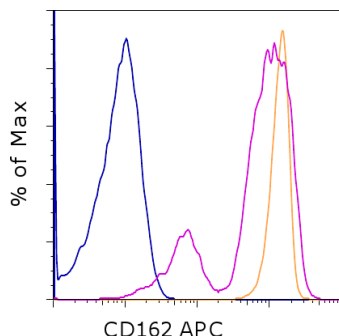


## Anti-Human CD162 (PSGL-1) APC

**Catalog Number:** 17-1629

**RUO: For Research Use Only. Not for use in diagnostic procedures.**



Staining of normal human peripheral blood cells with Mouse IgG2a K Isotype Control APC (cat. 17-4724) (blue histogram) or Anti-Human CD162 (PSGL-1) APC. Cells in the lymphocyte (pink histogram) or granulocyte (orange histogram) gate were used for analysis.

### Product Information

**Contents:** Anti-Human CD162 (PSGL-1) APC



**Catalog Number:** 17-1629

**Clone:** FLEG

**Concentration:** 5  $\mu$ L (0.125  $\mu$ g)/test

**Host/Isotype:** Mouse IgG2a



**Formulation:** aqueous buffer, 0.09% sodium azide, may contain carrier protein/stabilizer

**Temperature Limitation:** Store at 2-8°C. Do not freeze. Light sensitive material.



**Batch Code:** Refer to vial



**Use By:** Refer to vial

### Description

This FLEG monoclonal antibody recognizes human CD162, which is also known as P-selectin glycoprotein ligand-1 (PSGL-1). This 120-kDa protein exists as a homodimer on the surface of monocytes, neutrophils, granulocytes, peripheral T cells, some B cells, and a subset of CD34+ hematopoietic progenitor cells (HPCs) in the bone marrow. CD162 binds CD62P (P-selectin), CD62E (E-selectin), and CD62L (L-selectin) to mediate leukocyte interactions with each other as well as with activated platelets and endothelium. Thus, CD162 plays a critical role in leukocyte adhesion and rolling. Furthermore, the binding of CD162 to P-selectin on HPCs has been demonstrated to inhibit hematopoiesis. Studies have also demonstrated CD162 as the receptor for enterovirus 71.

### Applications Reported

This FLEG antibody has been reported for use in flow cytometric analysis.

### Applications Tested

This FLEG antibody has been pre-titrated and tested by flow cytometric analysis of normal human peripheral blood cells. This can be used at 5  $\mu$ L (0.125  $\mu$ g) per test. A test is defined as the amount ( $\mu$ g) of antibody that will stain a cell sample in a final volume of 100  $\mu$ L. Cell number should be determined empirically but can range from  $10^5$  to  $10^8$  cells/test.

### References

Nishimura Y, Shimojima M, Tano Y, Miyamura T, Wakita T, Shimizu H. Nat Med. Human P-selectin glycoprotein ligand-1 is a functional receptor for enterovirus 71. 2009 Jul;15(7):794-7.

Davenpeck KL, Brummet ME, Hudson SA, Mayer RJ, Bochner BS. Activation of human leukocytes reduces surface P-selectin glycoprotein ligand-1 (PSGL-1, CD162) and adhesion to P-selectin in vitro. J Immunol. 2000 Sep 1;165(5):2764-72.

Lévesque JP, Zannettino AC, Pudney M, Niutta S, Haylock DN, Snapp KR, Kansas GS, Berndt MC, Simmons PJ. PSGL-1-mediated adhesion of human hematopoietic progenitors to P-selectin results in suppression of hematopoiesis. Immunity. 1999 Sep;11(3):369-78.

Not for further distribution without written consent.

Copyright © 2000-2012 eBioscience, Inc.

Tel: 888.999.1371 or 858.642.2058 • Fax: 858.642.2046 • [www.ebioscience.com](http://www.ebioscience.com) • [info@ebioscience.com](mailto:info@ebioscience.com)

---

## Anti-Human CD162 (PSGL-1) APC

**Catalog Number:** 17-1629

**RUO: For Research Use Only. Not for use in diagnostic procedures.**

---

### Related Products

17-4724 Mouse IgG2a K Isotype Control APC

---

Not for further distribution without written consent.

Copyright © 2000-2012 eBioscience, Inc.

Tel: 888.999.1371 or 858.642.2058 • Fax: 858.642.2046 • [www.ebioscience.com](http://www.ebioscience.com) •  
[info@ebioscience.com](mailto:info@ebioscience.com)