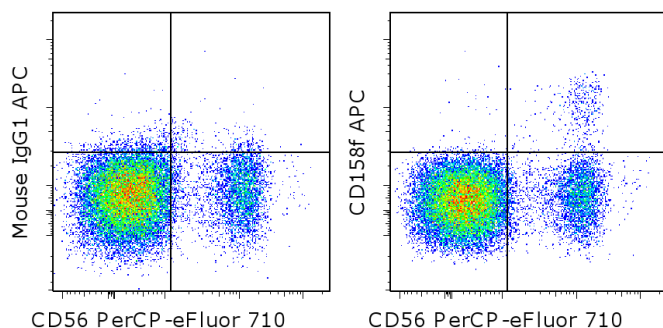


Anti-Human CD158f APC

Catalog Number: 17-1588

RUO: For Research Use Only. Not for use in diagnostic procedures.



Staining of normal human peripheral blood cells with Anti-Human CD56 (NCAM) PerCP-eFluor® 710 (cat. 46-0567) and Mouse IgG1 kappa Isotype Control APC (cat. 17-4714) (left) or Anti-Human CD158 APC (right). Cells in the lymphocyte gate were used for analysis.

Product Information

Contents: Anti-Human CD158f APC
Catalog Number: 17-1588
Clone: UP-R1
Concentration: 5 µL (0.25 µg)/test
Host/Isotype: Mouse IgG1

Formulation: aqueous buffer, 0.09% sodium azide, may contain carrier protein/stabilizer
Temperature Limitation: Store at 2-8°C. DO NOT FREEZE. LIGHT-SENSITIVE MATERIAL.
Batch Code: Refer to vial
Use By: Refer to vial

Description

This UP-R1 monoclonal antibody recognizes human CD158f, also known as KIR2DL5. CD158f is an inhibitory receptor and a member of the KIR (Killer cell Ig-like receptors) family of receptors, which recognizes subsets of HLA alleles. Expression is found mainly on a subset of NK cells with minimal expression also present on a minor subset of T lymphocytes in some individuals. This new member of the family is highly polymorphic and expression is not found on many human donors. Activation of the receptor and tyrosine phosphorylation recruits SHP-2 and SHP-1 to the ITIM cytoplasmic domain.

The UP-R1 antibody has been shown to inhibit NK cytotoxicity.

Applications Reported

This UP-R1 antibody has been reported for use in flow cytometric analysis.

Applications Tested

This UP-R1 antibody has been pre-titrated and tested by flow cytometric analysis of normal human peripheral blood cells. This can be used at 5 µL (0.25 µg) per test. A test is defined as the amount (µg) of antibody that will stain a cell sample in a final volume of 100 µL. Cell number should be determined empirically but can range from 10⁵ to 10⁸ cells/test.

References

Du Z, Sharma SK, Spellman S, Reed EF, Rajalingam R. KIR2DL5 alleles mark certain combination of activating KIR genes. *Genes Immun.* 2008 Jul;9(5):470-80.

Estefanía E, Flores R, Gómez-Lozano N, Aguilar H, López-Botet M, Vilches C Human KIR2DL5 is an inhibitory receptor expressed on the surface of NK and T lymphocyte subsets. *J Immunol.* 2007 Apr 1;178(7):4402-10. (**UP-R1**, FC, FA, IP PubMed)

Related Products

17-4714 Mouse IgG1 K Isotype Control APC (P3.6.2.8.1)

Not for further distribution without written consent.

Copyright © 2000-2012 eBioscience, Inc.

Tel: 888.999.1371 or 858.642.2058 • Fax: 858.642.2046 • www.ebioscience.com •
info@ebioscience.com

Anti-Human CD158f APC

Catalog Number: 17-1588

RUO: For Research Use Only. Not for use in diagnostic procedures.

46-0567 Anti-Human CD56 (NCAM) PerCP-eFluor® 710 (CMSSB)

Not for further distribution without written consent.

Copyright © 2000-2012 eBioscience, Inc.

Tel: 888.999.1371 or 858.642.2058 • Fax: 858.642.2046 • www.ebioscience.com •
info@ebioscience.com