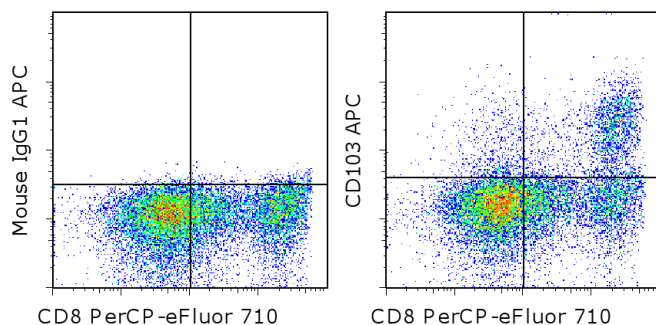


## Anti-Human CD103 (Integrin alpha E) APC

**Catalog Number:** 17-1037

**Also known as:** Integrin  $\alpha$ E, ITGAE

**RUO: For Research Use Only. Not for use in diagnostic procedures.**



Staining of 3-day PHA-stimulated normal human peripheral blood cells with Anti-Human CD8 $\alpha$  PerCP-eFluor<sup>®</sup> 710 (cat. 46-0087) and Mouse IgG1 K Isotype Control APC (cat. 17-4714) (left) or Anti-Human CD103 (Integrin alpha E) APC (right). Total viable cells were used for analysis.

### Product Information

**Contents:** Anti-Human CD103 (Integrin alpha E) APC

**REF** **Catalog Number:** 17-1037

**Clone:** Ber-ACT8

**Concentration:** 5  $\mu$ L (0.06  $\mu$ g)/test

**Host/Isotype:** Mouse IgG1

**HLDA Workshop:** V

**Formulation:** aqueous buffer, 0.09% sodium azide, may contain carrier protein/stabilizer

**Temperature Limitation:** Store at 2-8°C. Do not freeze. Light-sensitive material.

**Batch Code:** Refer to vial

**Use By:** Refer to vial



### Description

The Ber-ACT8 monoclonal antibody reacts with human CD103, the  $\alpha$ E integrin. CD103 non-covalently associates with integrin  $\beta$ 7. CD103 is expressed mainly on intraepithelial lymphocytes and a small subset of peripheral lymphocytes. CD103 is also expressed by hairy cell leukemia (HCL) and by some chronic B cell lymphocytic leukemias. *In vitro* stimulation of human T cells with mitogens induces upregulation of CD103. Epithelial cell antigen (E-cadherin) binds to CD103 and mediates homing of lymphocytes to the intestinal epithelium. Cross-blocking studies suggest that antibody clones B-Ly7 and Ber-ACT8 see different epitopes.

### Applications Reported

This Ber-ACT8 antibody has been reported for use in flow cytometric analysis.

### Applications Tested

This Ber-ACT8 antibody has been pre-titrated and tested by flow cytometric analysis of stimulated human peripheral blood cells. This can be used at 5  $\mu$ L (0.06  $\mu$ g) per test. A test is defined as the amount ( $\mu$ g) of antibody that will stain a cell sample in a final volume of 100  $\mu$ L. Cell number should be determined empirically but can range from  $10^5$  to  $10^8$  cells/test.

### References

Cepek KL, Wong DA, Brenner MB, Springer TA. 1995. CD103 cluster reort. Leucocyte Typing V. 1995.

Kruschwitz M, Frtzsche G, Schwarting R, Micklem K, Mason DY, Falini B, Stein H. 1995. Ber-ACT8: new monoclonal antibody to the mucosa lymphocyte antigen. J Clin Pathol 1991; 44(8):636-45. (Ber-ACT8, PubMed)

### Related Products

17-4714 Mouse IgG1 K Isotype Control APC (P3.6.2.8.1)

46-0087 Anti-Human CD8 $\alpha$  PerCP-eFluor<sup>®</sup> 710 (SK1 (SK-1))

Not for further distribution without written consent.

Copyright © 2000-2012 eBioscience, Inc.

Tel: 888.999.1371 or 858.642.2058 • Fax: 858.642.2046 • [www.ebioscience.com](http://www.ebioscience.com) •  
[info@ebioscience.com](mailto:info@ebioscience.com)