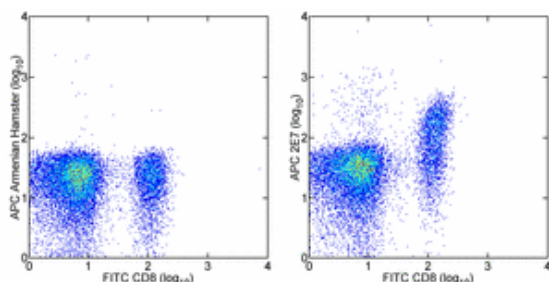


## Anti-Mouse CD103 (Integrin alpha E) APC

Catalog Number: 17-1031

Also Known As: Integrin  $\alpha$ E, ITGAE


RUO: For Research Use Only



Staining of C57BL/6 lymph node cells with Anti-Mouse CD8b FITC (cat. 11-0083) and 0.25  $\mu$ g of Armenian Hamster IgG Isotype Control APC (cat. 17-4888) (left) or 0.25  $\mu$ g of Anti-Mouse CD103 (Integrin  $\alpha$ E) APC (right). Total viable cells were used for analysis.

### Product Information

Contents: Anti-Mouse CD103 (Integrin alpha E) APC

 Catalog Number: 17-1031

Clone: 2E7

Concentration: 0.2 mg/ml

Host/Isotype: Armenian Hamster IgG

Formulation: aqueous buffer, 0.09% sodium azide, may contain carrier protein/stabilizer



Temperature Limitation: Store at 2-8°C. Do not freeze. Light sensitive material.



Batch Code: Refer to Vial



Use By: Refer to Vial



Caution, contains Azide

### Description

The 2E7 monoclonal antibody reacts with mouse CD103, the  $\alpha$ <sub>E</sub> integrin. CD103 non-covalently associates with integrin  $\beta$ <sub>7</sub> and is expressed on all intraepithelial lymphocytes, a small subset of peripheral lymphocytes, and dendritic epidermal T cells (DEC). Epithelial cell antigen E-cadherin binds to CD103 and mediates homing of lymphocytes to the intestinal epithelium.

### Applications Reported

This 2E7 antibody has been reported for use in flow cytometric analysis.

### Applications Tested

This 2E7 antibody has been tested by flow cytometric analysis of mouse lymph node cells. This can be used at less than or equal to 0.5  $\mu$ g per test. A test is defined as the amount ( $\mu$ g) of antibody that will stain a cell sample in a final volume of 100  $\mu$ L. Cell number should be determined empirically but can range from 10<sup>5</sup> to 10<sup>8</sup> cells/test. It is recommended that the antibody be carefully titrated for optimal performance in the assay of interest.

### References

Lefrancois, L., T. A. Barrett, et al. 1994. "Developmental expression of the alpha IEL beta 7 integrin on T cell receptor gamma delta and T cell receptor alpha beta T cells. Eur J Immunol 24(3): 635-40.

Suzuki R, Nakao A, et al. 2002. Localization of intestinal intraepithelial T lymphocytes involves regulation of alphaEbeta7 expression by transforming growth factor-beta. Int Immunol. 14(4):339-45. (IHC frozen, PubMed)

### Related Products

17-4888 Armenian Hamster IgG Isotype Control APC (eBio299Arm)

Not for further distribution without written consent.

Copyright © 2000-2010 eBioscience, Inc.

Tel: 888.999.1371 or 858.642.2058 • Fax: 858.642.2046 • [www.eBioscience.com](http://www.eBioscience.com) • [info@eBioscience.com](mailto:info@eBioscience.com)