

PE/Cy7 anti-mouse CD205 (DEC-205)

Catalog # / Size: 138209 / 25 µg
138210 / 100 µg

Clone: NLDC-145

Isotype: Rat IgG2a, κ

Immunogen: Mouse lymph node tissue

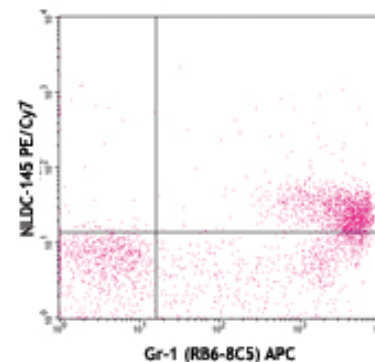
Reactivity: Mouse

Preparation: The antibody was purified by affinity chromatography and conjugated with PE/Cy7 under optimal conditions. The solution is free of unconjugated PE/Cy7 and unconjugated antibody.

Formulation: Phosphate-buffered solution, pH 7.2, containing 0.09% sodium azide.

Concentration: 0.2 mg/ml

Storage: The antibody solution should be stored undiluted at 4°C and protected from prolonged exposure to light. **Do not freeze.**



C57BL/6 mouse bone marrow cells stained with NLDC-145 PE/Cy7 and Gr-1 (RB6-8C5) APC

Applications:

Applications: FC - Quality tested

Recommended Usage: Each lot of this antibody is quality control tested by immunofluorescent staining with flow cytometric analysis. For immunofluorescent staining, the suggested use of this reagent is ≤1.0 µg per million cells in 100 µl volume. It is recommended that the reagent be titrated for optimal performance for each application.

Application Notes: Additional reported applications (for relevant formats) include: immunohistochemical staining of acetone-fixed frozen sections¹, Western Blot¹⁻³, and immunoprecipitation of bone marrow dendritic cell extracts².

Cy3, Cy5, Cy5.5 and Cy7 are subject to proprietary rights of GE Healthcare Bio-Sciences Corp. and Carnegie Mellon University and made and sold under license from GE Healthcare Bio-Sciences Corp. Sale of this product is licensed for research use only.

- Application References:**
1. Witmer-Pack MD, et al. 1995. *Cell. Immun.* 163:157. (IHC, WB)
 2. Swiggard WJ, et al. 1995. *Cell. Immun.* 165:302. (WB, IP)
 3. Bonifaz LC, et al. 2004. *J. Exp. Med.* 199:815. (WB)
 4. Yamazaki S, et al. 2002. *J. Immunol.* 181:6923. (FC)
 5. Bankoti J, et al. 2010. *Toxicol. Sci.* 115:422. (FC)

Description: CD205, also known as DEC-205, is a 205 kD integral membrane protein homologous to the macrophage mannose receptor. It is a type I cell surface protein that belong to the C-type lectin family. CD205 is expressed at high levels by dendritic cells and thymic epithelial cells. It is also expressed by a number of other cell types, such as B lymphocytes, macrophages, Langerhans cells, bone marrow stromal cells, granulocytes, epithelial cells of pulmonary airways, and the capillaries of the brain. CD205 is a novel endocytic receptor used by dendritic cells and thymic epithelial cells to direct captured antigens from the extracellular space to specialized antigen processing. It mediates antigen uptake and presentation and cross-presentation to T cells. It has been reported that CD205 acts as a recognition receptor for dying cells, potentially provides an important pathway for the uptake of self-antigen in the intrathymic environment, and is involved in peripheral tolerance. Antibody-mediated antigen-targeting via the DEC-205 receptor increases the efficiency of vaccination for T cell immunity.

- Antigen References:**
1. Jiang WP, et al. 1995. *Nature* 375:151.
 2. Small M and Kraal G. 2003. *Int. Immunol.* 15:197.
 3. Shrimpton RE, et al. 2009. *Mol. Immunol.* 46:1229.

Related Products:	Product	Clone	Application
	PE/Cy7 Rat IgG2a, κ Isotype Ctrl	RTK2758	FC, ICFC
	Cell Staining Buffer		FC, ICC, ICFC
	RBC Lysis Buffer (10X)		FC, ICFC
	TruStain fcX™ (anti-mouse CD16/32)	93	FC



For research use only. Not for diagnostic use. Not for resale. BioLegend will not be held responsible for patent infringement or other violations that may occur with the use of our products.



*These products may be covered by one or more Limited Use Label Licenses (see the BioLegend Catalog or our website, www.biolegend.com/ordering#license). BioLegend products may not be transferred to third parties, resold, modified for resale, or used to manufacture commercial products, reverse engineer functionally similar materials, or to provide a service to third parties without written approval of BioLegend. By use of these products you accept the terms and conditions of all applicable Limited Use Label Licenses. Unless otherwise indicated, these products are for research use only and are not intended for human or animal diagnostic, therapeutic or commercial use.