

Alexa Fluor® 647 anti-mouse CD196 (CCR6)

Catalog # / Size: 129807 / 25 µg
129808 / 100 µg

Clone: 29-2L17

Isotype: Armenian Hamster IgG

Immunogen: N-terminal peptide (aa. 2-38) of mouse CCR6 fused with GST

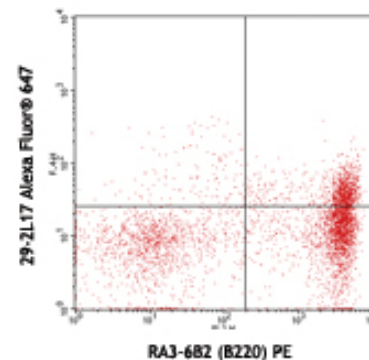
Reactivity: Mouse

Preparation: The antibody was purified by affinity chromatography, and conjugated with Alexa Fluor® 647 under optimal conditions. The solution is free of unconjugated Alexa Fluor® 647.

Formulation: Phosphate-buffered solution, pH 7.2, containing 0.09% sodium azide.

Concentration: 0.5 mg/ml

Storage: The antibody solution should be stored undiluted at 4°C and protected from prolonged exposure to light. **Do not freeze.**



C57BL/6 splenocytes stained with RA3-6B2 (B220) PE and 29-2L17 Alexa Fluor® 647

Applications:

Applications: FC - Quality tested

Recommended Usage: Each lot of this antibody is quality control tested by immunofluorescent staining with flow cytometric analysis. For immunofluorescent staining, the suggested use of this reagent is ≤0.25 µg per million cells in 100 µl volume. It is recommended that the reagent be titrated for optimal performance for each application.

* Alexa Fluor® 647 has a maximum emission of 668 nm when it is excited at 633 nm / 635 nm.

** Alexa Fluor® 647 is a registered trademark of Molecular Probes, Inc. Alexa Fluor® 647 dye antibody conjugates are sold under license from Molecular Probes, Inc. for research use only, except for use in combination with microarrays and high content screening, and are covered by pending and issued patents.

Description: CCR6 is a G-protein linked chemokine receptor which binds the chemokine CCL20/MIP-3a. It is expressed on B lymphocytes and certain subsets of dendritic cells and T cells. CCR6 is reported to be involved in mucosal immune response and lymphocyte migration and homeostasis.

Antigen References:

- Rossi D, *et al.* 1997. *J. Immunol.* 158:1033.
- Lukacs N, *et al.* 2001. *J. Exp. Med.* 194:551.
- Cook DN, *et al.* 2000. *Immunity* 12:495

Related Products:Product

Alexa Fluor® 647 Armenian Hamster IgG Isotype Ctrl
Cell Staining Buffer
RBC Lysis Buffer (10X)
TruStain fcX™ (anti-mouse CD16/32)

Clone
HTK888

93

Application
FC, ICFC
FC, ICC, ICFC
FC, ICFC
FC



For research use only. Not for diagnostic use. Not for resale. BioLegend will not be held responsible for patent infringement or other violations that may occur with the use of our products.



*These products may be covered by one or more Limited Use Label Licenses (see the BioLegend Catalog or our website, www.biolegend.com/ordering#license). BioLegend products may not be transferred to third parties, resold, modified for resale, or used to manufacture commercial products, reverse engineer functionally similar materials, or to provide a service to third parties without written approval of BioLegend. By use of these products you accept the terms and conditions of all applicable Limited Use Label Licenses. Unless otherwise indicated, these products are for research use only and are not intended for human or animal diagnostic, therapeutic or commercial use.