

## Alexa Fluor® 647 anti-mouse CD199 (CCR9)

**Catalog # / Size:** 129709 / 25 µg  
129710 / 100 µg

**Clone:** 9B1

**Isotype:** Rat IgG2a, κ

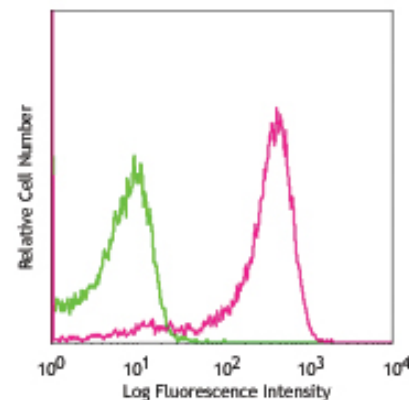
**Reactivity:** Mouse

**Preparation:** The antibody was purified by affinity chromatography, and conjugated with Alexa Fluor® 647 under optimal conditions. The solution is free of unconjugated Alexa Fluor® 647.

**Formulation:** Phosphate-buffered solution, pH 7.2, containing 0.09% sodium azide.

**Concentration:** 0.5 mg/ml

**Storage:** The antibody solution should be stored undiluted at 4°C and protected from prolonged exposure to light. **Do not freeze.**



*C57BL/6 thymocytes stained with 9B1 Alexa Fluor® 647*

## Applications:

**Applications:** FC - *Quality tested*

**Recommended Usage:** Each lot of this antibody is quality control tested by immunofluorescent staining with flow cytometric analysis. For immunofluorescent staining, the suggested use of this reagent is ≤0.25 µg per million cells in 100 µl volume. It is recommended that the reagent be titrated for optimal performance for each application.

\* Alexa Fluor® 647 has a maximum emission of 668 nm when it is excited at 633 nm / 635 nm.

\*\* Alexa Fluor® 647 is a registered trademark of Molecular Probes, Inc. Alexa Fluor® 647 dye antibody conjugates are sold under license from Molecular Probes, Inc. for research use only, except for use in combination with microarrays and high content screening, and are covered by pending and issued patents.

**Description:** CCR9 is a member of the G protein coupled receptor family and is involved in T cell development in the thymus and in gut-associated immune response. The interaction of CCR9 with its ligand CCL25 (TECK, thymus-expressed chemokine) may direct the trafficking of developing T cells in the thymus and generation of gut-specific immunological memory.

**Antigen References:**

1. Zaballos A, *et al.* 1999. *J. Immunol.* 162:5671
2. Wurbel MA, *et al.* 2007. *J. Immunol.* 178:7598
3. Wurbel MA, *et al.* 2006. *Eur. J. Immunol.* 36:73

### Related Products:

**Product**  
 Alexa Fluor® 647 Rat IgG2a, κ Isotype Ctrl  
 Cell Staining Buffer  
 RBC Lysis Buffer (10X)  
 TruStain fcX™ (anti-mouse CD16/32)

**Clone**  
 RTK2758

93

**Application**  
 FC, ICFC  
 FC, ICC, ICFC  
 FC, ICFC  
 FC



For research use only. Not for diagnostic use. Not for resale. BioLegend will not be held responsible for patent infringement or other violations that may occur with the use of our products.



\*These products may be covered by one or more Limited Use Label Licenses (see the BioLegend Catalog or our website, [www.biolegend.com/ordering#license](http://www.biolegend.com/ordering#license)). BioLegend products may not be transferred to third parties, resold, modified for resale, or used to manufacture commercial products, reverse engineer functionally similar materials, or to provide a service to third parties without written approval of BioLegend. By use of these products you accept the terms and conditions of all applicable Limited Use Label Licenses. Unless otherwise indicated, these products are for research use only and are not intended for human or animal diagnostic, therapeutic or commercial use.