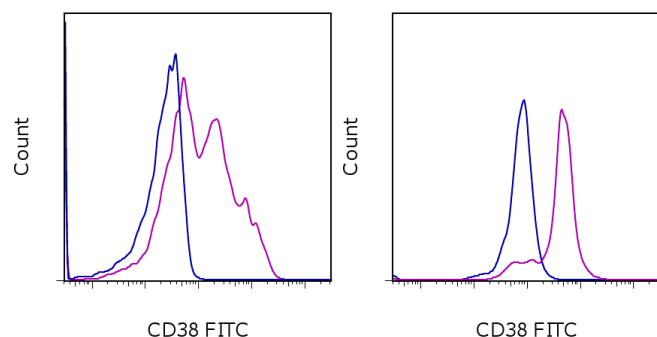


Anti-Human CD38 APC

Catalog Number: 17-0389

Also known as: ADP-Ribosyl Cyclase, Cyclic ADP-Ribose Hydrolase

RUO: For Research Use Only. Not for use in diagnostic procedures.



Staining of normal human peripheral blood cells with Mouse IgG1 K Isotype Control APC (cat. 17-4714) (blue histogram) or Anti-Human CD38 APC (purple histogram). Cells in the lymphocyte gate (left) and monocyte gate (right) were used for analysis.

Product Information



Contents: Anti-Human CD38 APC

Catalog Number: 17-0389

Clone: HIT2

Concentration: 5 µL (0.25 µg)/test

Host/Isotype: Mouse IgG1, kappa

HLDA Workshop: III 155



Formulation: aqueous buffer, 0.09% sodium azide, may contain carrier protein/stabilizer

Temperature Limitation: Store at 2-8°C. Do not freeze. Light sensitive material.

Batch Code: Refer to vial

Use By: Refer to vial

Contains sodium azide

Description

The HIT2 monoclonal antibody reacts with the human CD38 molecule, an approximately 45 kDa type II transmembrane protein. CD38 is expressed by thymocytes, peripheral B cells including plasma cells, activated T cells, and monocytes. CD38 is a counter-receptor for CD31 and has both cyclase and hydrolase enzymatic activity.

Applications Reported

This HIT2 antibody has been reported for use in flow cytometric analysis.

Applications Tested

This HIT2 antibody has been pre-titrated and tested by flow cytometric analysis of normal human peripheral blood cells. This can be used at 5 µL (0.25 µg) per test. A test is defined as the amount (µg) of antibody that will stain a cell sample in a final volume of 100 µL. Cell number should be determined empirically but can range from 10⁵ to 10⁸ cells/test.

References

Horenstein AL, Stockinger H, Imhof BA, Malavasi F. CD38 binding to human myeloid cells is mediated by mouse and human CD31. *Biochem J.* 1998 Mar 15;330 (Pt 3):1129-35.

Deaglio S, Morra M, Mallone R, Ausiello CM, Prager E, Garbarino G, Dianzani U, Stockinger H, Malavasi F. Human CD38 (ADP-ribosyl cyclase) is a counter-receptor of CD31, an Ig superfamily member. *J Immunol.* 1998 Jan 1;160(1):395-402.

Joshua D, Petersen A, Brown R, Pope B, Snowdon L, Gibson J. The labelling index of primitive plasma cells determines the clinical behaviour of patients with myelomatosis. *Br J Haematol.* 1996 Jul;94(1):76-81.

McMichael, AJ, et al. eds. (1987) *Leucocyte Typing III: White Cell Differentiation Antigens.* Oxford University Press. New York.

Related Products

00-4222 Flow Cytometry Staining Buffer

Not for further distribution without written consent.

Copyright © 2000-2012 eBioscience, Inc.

Tel: 888.999.1371 or 858.642.2058 • Fax: 858.642.2046 • www.ebioscience.com •
info@ebioscience.com

Anti-Human CD38 APC

Catalog Number: 17-0389

Also known as: ADP-Ribosyl Cyclase, Cyclic ADP-Ribose Hydrolase

RUO: For Research Use Only. Not for use in diagnostic procedures.

17-4714 Mouse IgG1 K Isotype Control APC (P3.6.2.8.1)

Not for further distribution without written consent.

Copyright © 2000-2012 eBioscience, Inc.

Tel: 888.999.1371 or 858.642.2058 • Fax: 858.642.2046 • www.ebioscience.com •
info@ebioscience.com