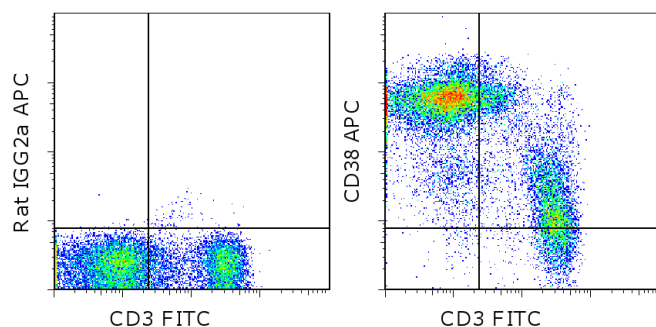


## Anti-Mouse CD38 APC

**Catalog Number:** 17-0381

**Also known as:** ADP-Ribosyl Cyclase, Cyclic ADP-Ribose Hydrolase

**RUO: For Research Use Only. Not for use in diagnostic procedures.**



Staining of C57Bl/6 splenocytes with Anti-Mouse CD3e FITC (cat. 11-0031) and 0.03 ug of Rat IgG2a K Isotype Control APC (cat. 17-4321) (left) or 0.03 ug of Anti-Mouse CD38 APC (right). Cells in the lymphocyte gate were used for analysis.

### Product Information



**Contents:** Anti-Mouse CD38 APC

**Catalog Number:** 17-0381

**Clone:** 90

**Concentration:** 0.2 mg/mL

**Host/Isotype:** Rat IgG2a, kappa



**Formulation:** aqueous buffer, 0.09% sodium azide, may contain carrier protein/stabilizer

**Temperature Limitation:** Store at 2-8°C. Do not freeze. Light sensitive material.



**Batch Code:** Refer to vial



**Use By:** Refer to vial



**Caution, contains Azide**

### Description

The 90 monoclonal antibody reacts with the mouse CD38 molecule, an ~42 kDa type II transmembrane protein. CD38 is expressed at increasingly higher levels on B cells at each stage of B-cell differentiation, and is then down-regulated on germinal center B cells and mature plasma cells. Its expression is reported on a subpopulation of thymocytes, mature T cells, and NK cells. Crosslinking of CD38 on the surface of mature, resting B cells induces B-cell proliferation, which is enhanced by co-signals such as IL-4 and LPS. CD38, a counter-receptor for CD31, is an ectoenzyme with cyclase and hydrolase enzymatic activity and is speculated to play a role in lymphocyte activation and differentiation.

### Applications Reported

The 90 antibody has been reported for use in flow cytometric analysis.

### Applications Tested

The 90 antibody has been tested by flow cytometric analysis of mouse splenocyte suspensions. This can be used at less than or equal to 0.06 µg per test. A test is defined as the amount (µg) of antibody that will stain a cell sample in a final volume of 100 µL. Cell number should be determined empirically but can range from 10<sup>5</sup> to 10<sup>8</sup> cells/test. It is recommended that the antibody be carefully titrated for optimal performance in the assay of interest.

### References

Oliver, A. M., J. C. Grimaldi, et al. 1999. Independently ligating CD38 and Fc gammaRIIB relays a dominant negative signal to B cells. *Hybridoma* 18(2): 113-9.

Oliver, A. M., F. Martin, et al. 1997. Marginal zone B cells exhibit unique activation, proliferative and immunoglobulin secretory responses. *Eur J Immunol* 27(9): 2366-74.

Oliver, A. M., F. Martin, et al. 1997. Mouse CD38 is down-regulated on germinal center B cells and mature plasma cells. *J Immunol* 158(3): 1108-15.

Not for further distribution without written consent.

Copyright © 2000-2012 eBioscience, Inc.

Tel: 888.999.1371 or 858.642.2058 • Fax: 858.642.2046 • [www.ebioscience.com](http://www.ebioscience.com) • [info@ebioscience.com](mailto:info@ebioscience.com)

---

## **Anti-Mouse CD38 APC**

**Catalog Number:** 17-0381

**Also known as:** ADP-Ribosyl Cyclase, Cyclic ADP-Ribose Hydrolase

**RUO: For Research Use Only. Not for use in diagnostic procedures.**

---

### **Related Products**

11-0031 Anti-Mouse CD3e FITC (145-2C11)

17-4321 Rat IgG2a K Isotype Control APC (eBR2a)