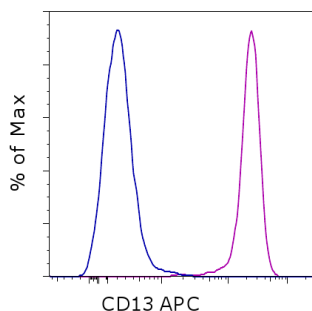


## Anti-Human CD13 APC

**Catalog Number:** 17-0138

**Also known as:** Alanyl Aminopeptidase (ANPEP), Aminopeptidase N (PEPN)

**RUO: For Research Use Only. Not for use in diagnostic procedures.**



Staining of normal human peripheral blood cells with Mouse IgG1 K Isotype Control APC (cat. 17-4714) (blue histogram) or Anti-Human CD13 APC (purple histogram). Cells in the granulocyte gate were used for analysis.

### Product Information



**Contents:** Anti-Human CD13 APC

**Catalog Number:** 17-0138

**Clone:** WM-15 (WM15)

**Concentration:** 5  $\mu$ L (0.25  $\mu$ g)/test

**Host/Isotype:** Mouse IgG1, kappa

**HLDA Workshop:** III M213



**Formulation:** aqueous buffer, 0.09% sodium azide, may contain carrier protein/stabilizer

**Temperature Limitation:** Store at 2-8°C. Do not freeze. Light sensitive material.



**Batch Code:** Refer to vial



**Use By:** Refer to vial

**Caution, contains Azide**

### Description

The WM-15 monoclonal antibody reacts with human CD13, also known as aminopeptidase N. CD13 is a transmembrane ectoenzyme occurring on monocytes and granulocytes but not lymphocytes in blood. It is also reportedly on a wide variety of cells and in a wide variety of tissues, including endothelial cells, epithelial cells, fibroblasts, kidney proximal tubules, intestine, and placenta. CD13 is reported to have many different functions including degradation of enkephalins and endorphins, terminal degradation of peptides, amino acid scavenging, antigen processing, and adhesion and migration of cells.

### Applications Reported

The WM-15 (WM15) antibody has been reported for use in flow cytometric analysis, and microscopy.

### Applications Tested

The WM-15 (WM15) antibody has been pre-titrated and tested by flow cytometric analysis of lysed whole blood. This can be used at 5  $\mu$ L (0.25  $\mu$ g)/per test. A test is defined as the amount ( $\mu$ g)/test of antibody that will stain a cell sample in a final volume of 100  $\mu$ L. Cell number should be determined empirically but can range from  $11^5$  to  $10^8$  cells/test.

### References

Look AT, Ashmun RA, Shapiro LH, Peiper SC. 1989. Human myeloid plasma membrane glycoprotein CD13 (gp150) is identical to aminopeptidase N. J Clin Invest 83:1299-1307

Riemann D, Kehlen A, Thiele K, Lohn M, Langner J. 1997. Induction of aminopeptidase N/CD13 on human lymphocytes after adhesion to fibroblast-like synoviocytes, endothelial cells, epithelial cells, and monocytes/macrophages. J Immunol. 158(7):3425-32.

### Related Products

17-4714 Mouse IgG1 K Isotype Control APC (P3.6.2.8.1)

Not for further distribution without written consent.

Copyright © 2000-2012 eBioscience, Inc.

Tel: 888.999.1371 or 858.642.2058 • Fax: 858.642.2046 • [www.ebioscience.com](http://www.ebioscience.com) •  
[info@ebioscience.com](mailto:info@ebioscience.com)

---

## Anti-Human CD13 APC

**Catalog Number:** 17-0138

**Also known as:** Alanyl Aminopeptidase (ANPEP), Aminopeptidase N (PEPN)

**RUO: For Research Use Only. Not for use in diagnostic procedures.**

---

---

Not for further distribution without written consent.

Copyright © 2000-2012 eBioscience, Inc.

Tel: 888.999.1371 or 858.642.2058 • Fax: 858.642.2046 • [www.ebioscience.com](http://www.ebioscience.com) •  
[info@ebioscience.com](mailto:info@ebioscience.com)