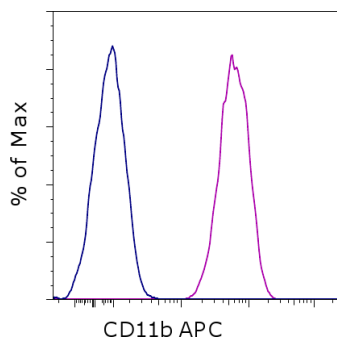


## Anti-Human CD11b (activation epitope) APC

**Catalog Number:** 17-0113

**Also known as:** Integrin alpha M, Mac-1 alpha, Complement Receptor 3 alpha (CR3A)

**RUO: For Research Use Only. Not for use in diagnostic procedures.**



Staining of 5-minute PMA/Ionomycin-stimulated normal human peripheral blood cells with Mouse IgG1 kappa Isotype Control APC (cat. 17-4714) (blue histogram) or Anti-Human CD11b (activation epitope) APC (purple histogram). Cells in the monocyte gate were used for analysis.

### Product Information

**Contents:** Anti-Human CD11b (activation epitope) APC

**Catalog Number:** 17-0113

**Clone:** CBRM1/5

**Concentration:** 5  $\mu$ L (0.5  $\mu$ g)/test

**Host/Isotype:** Mouse IgG1, kappa

**Formulation:** aqueous buffer, 0.09% sodium azide, may contain carrier protein/stabilizer

**Temperature Limitation:** Store at 2-8°C. Do not freeze. Light-sensitive material.

**Batch Code:** Refer to vial

**Use By:** Refer to vial

**Contains sodium azide**

### Description

The CBRM1/5 monoclonal antibody reacts with an activation-specific epitope of human Mac-1. CBRM1/5 binds a subset of Mac-1 molecules on neutrophils and monocytes after stimulation with chemoattractants or phorbol esters but does not recognize Mac-1 on resting myeloid cells. Through interactions with its ligands, Mac-1 participates in adhesive cell interactions. The epitope recognized by this mAb localizes to the I domain on the  $\alpha$  chain of Mac-1 very close to the ligand binding site in a region that is widely exposed. CBRM1/5 blocks Mac-1 dependent adhesion to fibrinogen and ICAM-1 and inhibits chemoattractant-stimulated adhesion of eosinophils to the Intercellular Adhesion Molecule-1 (ICAM-1). It should be noted that low level activation may occur during processing of freshly drawn blood. Therefore the CBRM1.5 antibody may exhibit some binding to Mac-1 in these unstimulated samples. However, higher levels of Mac-1 expression are observed in activated samples when compared to unstimulated cells.

### Applications Reported

This CBRM1/5 antibody has been reported for use in flow cytometric analysis.

### Applications Tested

This CBRM1/5 antibody has been pre-titrated and tested by flow cytometric analysis of stimulated peripheral blood cells. This can be used at 5  $\mu$ L (0.5  $\mu$ g) per test. A test is defined as the amount ( $\mu$ g) of antibody that will stain a cell sample in a final volume of 100  $\mu$ L. Cell number should be determined empirically but can range from  $10^5$  to  $10^8$  cells/test.

### References

Oxvig C, Lu C, Springer TA. Conformational changes in tertiary structure near the ligand binding site of an integrin I domain. Proc Natl Acad Sci U S A. 1999 Mar 2;96(5):2215-20.

Weber C, Kitayama J, Springer TA. Differential regulation of beta 1 and beta 2 integrin avidity by chemoattractants in eosinophils Proc Natl Acad Sci U S A. 1996 Oct 1;93(20):10939-44.

Diamond MS, Springer TA. A subpopulation of Mac-1 (CD11b/CD18) molecules mediates neutrophil adhesion to

Not for further distribution without written consent.

Copyright © 2000-2012 eBioscience, Inc.

Tel: 888.999.1371 or 858.642.2058 • Fax: 858.642.2046 • [www.ebioscience.com](http://www.ebioscience.com) • [info@ebioscience.com](mailto:info@ebioscience.com)

---

## **Anti-Human CD11b (activation epitope) APC**

**Catalog Number:** 17-0113

**Also known as:** Integrin alpha M, Mac-1 alpha, Complement Receptor 3 alpha (CR3A)

**RUO: For Research Use Only. Not for use in diagnostic procedures.**

---

ICAM-1 and fibrinogen. J Cell Biol. 1993 Jan;120(2):545-56.

### **Related Products**

17-4714 Mouse IgG1 K Isotype Control APC (P3.6.2.8.1)