

## PE anti-mouse CD155 (PVR)

**Catalog # / Size:** 132205 / 25 µg  
132206 / 100 µg

**Clone:** 4.24.1

**Isotype:** Rat IgG2a, κ

**Immunogen:** EL4 transfected with mouse CD155

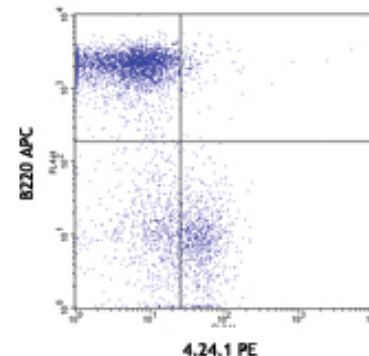
**Reactivity:** Mouse

**Preparation:** The antibody was purified by affinity chromatography, and conjugated with PE under optimal conditions. The solution is free of unconjugated PE and unconjugated antibody.

**Formulation:** Phosphate-buffered solution, pH 7.2, containing 0.09% sodium azide.

**Concentration:** 0.2 mg/ml

**Storage:** The antibody solution should be stored undiluted at 4°C and protected from prolonged exposure to light. **Do not freeze.**



C57BL/6 splenocytes stained with RA3-6B2 (B220) APC and 4.24.1 PE

## Applications:

**Applications:** FC - Quality tested

**Recommended Usage:** Each lot of this antibody is quality control tested by immunofluorescent staining with flow cytometric analysis. For immunofluorescent staining, the suggested use of this reagent is ≤ 0.25 µg per 10<sup>6</sup> cells in 100 µl volume. It is recommended that the reagent be titrated for optimal performance for each application.

**Application References:**

1. Tahara-Hanaoka S, *et al.* 2004. *Int Immunol* 16:533
2. Maier MK, *et al.* 2007. *Eur J. Immunol.* 37:2214
3. Bottino C, *et al.* 2003. *J. Exp. Med.* 198:557
4. Chan CJ, *et al.* 2010. *J. Immunol.* 184:902. PubMed

**Description:** Mouse CD155, also known as homolog of polivirus receptor, is the founding member of a subfamily of immunoglobulin-like adhesion receptors (nectins). Mouse CD155 is expressed on a wide variety of cells of hematopoietic origin apart from its existence on the epithelial cells. The engagement of CD155 with CD226 and CD96 induces cytotoxicity of NK cells and CTL.

**Antigen References:** 1. Mendelsohn C *et al.* 1989. *Cell* 56:855

### Related Products:

Product  
PE Rat IgG2a, κ Isotype Ctrl  
Cell Staining Buffer

RBC Lysis Buffer (10X)

TruStain fcX™ (anti-mouse CD16/32)

Clone  
RTK2758

93

Application  
FC, ICFC  
FC, ICC, ICFC  
FC, ICFC  
FC



For research use only. Not for diagnostic use. Not for resale. BioLegend will not be held responsible for patent infringement or other violations that may occur with the use of our products.



\*These products may be covered by one or more Limited Use Label Licenses (see the BioLegend Catalog or our website, [www.biolegend.com/ordering#license](http://www.biolegend.com/ordering#license)). BioLegend products may not be transferred to third parties, resold, modified for resale, or used to manufacture commercial products, reverse engineer functionally similar materials, or to provide a service to third parties without written approval of BioLegend. By use of these products you accept the terms and conditions of all applicable Limited Use Label Licenses. Unless otherwise indicated, these products are for research use only and are not intended for human or animal diagnostic, therapeutic or commercial use.