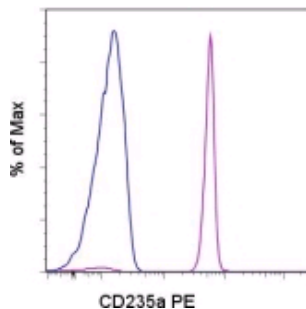


Anti-Human CD235a (Glycophorin A) PE

Catalog Number: 12-9987

RUO: For Research Use Only



Staining of normal human peripheral blood cells with Mouse IgG2b κ Isotype Control PE (cat. 12-4732) (blue histogram) or Anti-Human CD235a (Glycophorin A) PE (purple histogram). Non-leukocytes were used for analysis.

Product Information

Contents: Anti-Human CD235a (Glycophorin A) PE


REF Catalog Number: 12-9987

Clone: HIR2 (also GA-R2)


Concentration: 0.2 mg/ml


Host/Isotype: Mouse IgG2b, κ

Formulation: aqueous buffer, 0.09% sodium azide, may contain carrier protein/stabilizer

 Temperature Limitation: Store at 2-8°C. Do not freeze. Light sensitive material.

LOT Batch Code: Refer to Vial

 Use By: Refer to Vial

 Caution, contains Azide

Description

The HIR2 monoclonal antibody reacts with human glycophorin A, sialoglycoproteins expressed by erythroid precursors and mature circulating red cells.

Applications Reported

The HIR2 (also GA-R2) antibody has been reported for use in flow cytometric analysis.

Applications Tested

The HIR2 (also GA-R2) antibody has been tested by flow cytometric analysis of human peripheral blood leukocytes. This can be used at less than or equal to 0.015 μg per test. A test is defined as the amount (μg) of antibody that will stain a cell sample in a final volume of 100 μL . Cell number should be determined empirically but can range from 10^5 to 10^8 cells/test. It is recommended that the antibody be carefully titrated for optimal performance in the assay of interest.

References

Kishimoto, T., A.E.G., von dem Borne, et al. eds. 1998. Leucocyte Typing VI: White Cell Differentiation Antigens. Garland Publishing Inc. London.

Related Products

12-4732 Mouse IgG2b K Isotype Control PE

Not for further distribution without written consent.

Copyright © 2000-2010 eBioscience, Inc.

Tel: 888.999.1371 or 858.642.2058 • Fax: 858.642.2046 • www.eBioscience.com • info@eBioscience.com