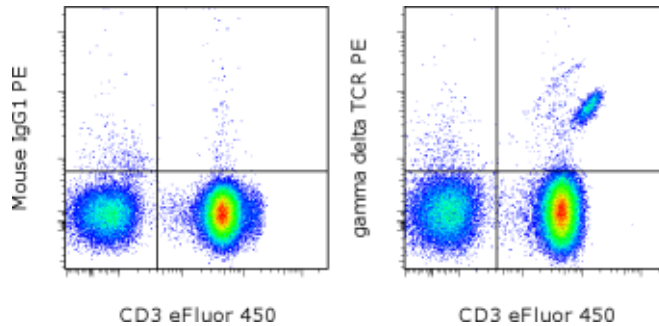


Anti-Human gamma delta TCR PE

Catalog Number: 12-9959

RUO: For Research Use Only. Not for use in diagnostic procedures.



Staining of normal human peripheral blood cells with Anti-Human CD3 eFluor[®] 450 (cat. 48-0038) and Mouse IgG1 K Isotype Control PE (cat. 12-4714) (left) or Anti-Human gamma delta TCR PE (right). Cells in the lymphocyte gate were used for analysis.

Product Information

Contents: Anti-Human gamma delta TCR PE
Catalog Number: 12-9959
Clone: B1.1
Concentration: 5 μ L (4 μ g)/test
Host/Isotype: Mouse IgG1, kappa

Formulation: aqueous buffer, 0.09% sodium azide, may contain carrier protein/stabilizer
Temperature Limitation: Store at 2-8°C. Do not freeze. Light sensitive material.
Batch Code: Refer to vial
Use By: Refer to vial

Description

The B1.1 monoclonal antibody reacts with the human gamma delta TCR complex. The gamma delta TCR is expressed by a small subset of T cells in the thymus, peripheral lymphoid tissues, intestinal epithelium, and epidermis. The exact specificity, ligand and function of gamma delta TCR-bearing T cells are not yet fully understood; it is suggested that these cells recognize bacterial ligands and some tumor cells in the context of MHC class I-like gene products and play a role in regulation of the immune response and during bacterial infection. This monoclonal can be used as a phenotypic marker for gamma delta TCR-expressing T cells.

Applications Reported

The B1.1 antibody has been reported for use in flow cytometric analysis.

Applications Tested

This B1.1 antibody has been pre-titrated and tested by flow cytometric analysis of normal human peripheral blood cells. This can be used at 5 μ L (4 μ g) per test. A test is defined as the amount (μ g) of antibody that will stain a cell sample in a final volume of 100 μ L. Cell number should be determined empirically but can range from 10^5 to 10^8 cells/test.

References

De Libero, G. 1997. Sentinel function of broadly reactive human gamma delta T cells. *Immunol Today* 18(1): 22-6.

Nick, S., P. Pileri, et al. 1995. T cell receptor gamma delta repertoire is skewed in cerebrospinal fluid of multiple sclerosis patients: molecular and functional analyses of antigen-reactive gamma delta clones. *Eur J Immunol* 25(2): 355-63.

Merlo, A., L. Filgueira, et al. 1993. T-cell receptor V-gene usage in neoplasms of the central nervous system. A comparative analysis in cultured tumor infiltrating and peripheral blood T cells. *J Neurosurg* 78(4): 630-7.

Deetz CO, Hebbeler AM, et al. 2006. Gamma interferon secretion by human Vgamma2Vdelta2 T cells after stimulation with antibody against the T-cell receptor plus the Toll-Like receptor 2 agonist Pam3Cys. *Infect Immun*.

Not for further distribution without written consent.

Copyright © 2000-2012 eBioscience, Inc.

Tel: 888.999.1371 or 858.642.2058 • Fax: 858.642.2046 • www.ebioscience.com •
info@ebioscience.com

Anti-Human gamma delta TCR PE

Catalog Number: 12-9959

RUO: For Research Use Only. Not for use in diagnostic procedures.

74(8):4505-11. (B1.1, FA, PubMed)

Related Products

12-4714 Mouse IgG1 K Isotype Control PE (P3.6.2.8.1)

48-0038 Anti-Human CD3 eFluor® 450 (UCHT1)

Not for further distribution without written consent.

Copyright © 2000-2012 eBioscience, Inc.

Tel: 888.999.1371 or 858.642.2058 • Fax: 858.642.2046 • www.ebioscience.com •
info@ebioscience.com