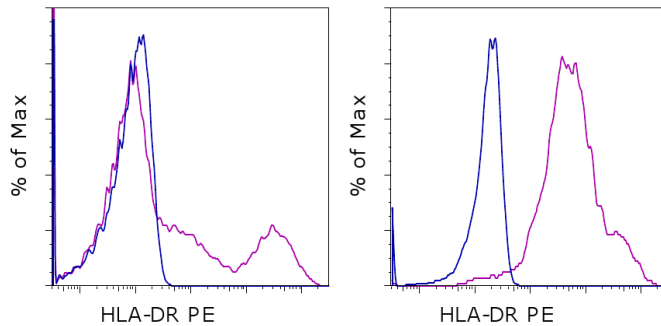


## Anti-Human HLA-DR PE

**Catalog Number:** 12-9956

**RUO: For Research Use Only. Not for use in diagnostic procedures.**



Staining of normal human peripheral blood cells with Mouse IgG2b K Isotype Control PE (cat. 12-4732) (blue histogram) or Anti-Human HLA-DR PE (purple histogram). Cells in the lymphocyte (left) or monocyte (right) gate were used for analysis.

### Product Information

**Contents:** Anti-Human HLA-DR PE  
**Catalog Number:** 12-9956  
**Clone:** LN3  
**Concentration:** 5  $\mu$ L (0.007  $\mu$ g)/test  
**Host/Isotype:** Mouse IgG2b, kappa

**Formulation:** aqueous buffer, 0.09% sodium azide, may contain carrier protein/stabilizer  
**Temperature Limitation:** Store at 2-8°C. Do not freeze. Light sensitive material.

**Batch Code:** Refer to vial

**Use By:** Refer to vial

### Description

The LN3 mAb reacts with the human major histocompatibility complex (MHC) class II, HLA-DR. HLA-DR is expressed on the surface of human antigen presenting cells (APC) including B cells, monocytes, macrophages, DCs, and activated T cells. HLA-DR is a heterodimeric transmembrane protein composed of  $\alpha$  and  $\beta$  subunits and plays an important role in the presentation of peptides to CD4<sup>+</sup> T lymphocytes.

### Applications Reported

The LN3 antibody has been reported for use in flow cytometric analysis.

### Applications Tested

The LN3 antibody has been pre-titrated and tested by flow cytometric analysis of human peripheral blood leukocytes. This can be used at 5  $\mu$ L (0.007  $\mu$ g) per test. A test is defined as the amount ( $\mu$ g) of antibody that will stain a cell sample in a final volume of 100  $\mu$ L. Cell number should be determined empirically but can range from 10<sup>5</sup> to 10<sup>8</sup> cells/test.

### References

Fullen, D. R. and J. T. Headington. 1998. Factor XIIIa-positive dermal dendritic cells and HLA-DR expression in radial versus vertical growth-phase melanomas. *J Cutan Pathol.* 25(10): 553-8.

Hua, Z. X., K. E. Tanaka, et al. 1998. Immunoreactivity for LN2 and LN3 distinguishes small cell carcinomas from non-small cell carcinomas in the lung. *Hum Pathol.* 29(12): 1441-6.

Ioachim, H. L., S. E. Pambuccian, et al. 1996. Lymphoid monoclonal antibodies reactive with lung tumors. Diagnostic applications. *Am J Surg Pathol.* 20(1): 64-71.

Davey, F. R., S. Olson, et al. 1988. The immunophenotyping of extramedullary myeloid cell tumors in paraffin-embedded tissue sections. *Am J Surg Pathol.* 12(9): 699-707.

Norton, A. J. and P. G. Isaacson. 1987. Detailed phenotypic analysis of B-cell lymphoma using a panel of antibodies

Not for further distribution without written consent.

Copyright © 2000-2012 eBioscience, Inc.

Tel: 888.999.1371 or 858.642.2058 • Fax: 858.642.2046 • [www.ebioscience.com](http://www.ebioscience.com) •  
[info@ebioscience.com](mailto:info@ebioscience.com)

---

## Anti-Human HLA-DR PE

**Catalog Number:** 12-9956

**RUO: For Research Use Only. Not for use in diagnostic procedures.**

---

reactive in routinely fixed wax-embedded tissue. Am J Pathol. 128(2): 225-40.

### Related Products

12-4732 Mouse IgG2b K Isotype Control PE

---

Not for further distribution without written consent.

Copyright © 2000-2012 eBioscience, Inc.

Tel: 888.999.1371 or 858.642.2058 • Fax: 858.642.2046 • [www.ebioscience.com](http://www.ebioscience.com) •  
[info@ebioscience.com](mailto:info@ebioscience.com)