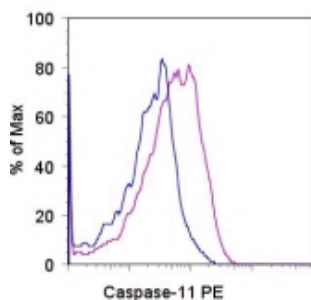


Anti-Mouse Caspase 11 PE

Catalog Number: 12-9935

Also Known As: Caspase11

RUO: For Research Use Only



Intracellular staining of unstimulated (blue histogram) or overnight LPS-stimulated (purple histogram) C57BL/6 splenocytes with 0.25 µg of Anti-Human Caspase 11 PE.

Product Information

Contents: Anti-Mouse Caspase 11 PE


REF Catalog Number: 12-9935

Clone: 17D9

Concentration: 0.2 mg/ml


Host/Isotype: Rat IgG2a

Formulation: aqueous buffer, 0.09% sodium azide, may contain carrier protein/stabilizer

 Temperature Limitation: Store at 2-8°C. Do not freeze. Light sensitive material.

LOT Batch Code: Refer to Vial

 Use By: Refer to Vial

 Caution, contains Azide

Description

The monoclonal antibody 17D9 recognizes mouse Caspase-11, a cysteine protease that plays a role in apoptosis and inflammation. Caspase-11 exists as a 43 kDa and 38 kDa pro-caspase form and a 30 and 10 kDa active form. The 17D9 antibody recognizes p43, p38 and p30 forms. Caspase-11 is an upstream protease that activates other caspases, such as caspase-3, -7 and -1, which in turn activate IL-1 β . Under Caspase-11-deficient conditions, cells are unable to process or secrete IL-1 β in response to stimuli and show defects in motility, which are due to disruption of its interaction with Aip1, an actin binding protein. Caspase-11 is homologous to human Caspase-4 (around 60%). Unlike other caspases which tend to be constitutively expressed, caspase-11 is upregulated by LPS treatment in macrophages, lymphocytes and hepatocytes.

Applications Reported

This 17D9 antibody has been reported for use in intracellular staining followed by flow cytometric analysis.

Applications Tested

This 17D9 antibody has been tested by intracellular staining and flow cytometric analysis of stimulated mouse splenocytes. This can be used at less than or equal to 0.5 µg per test. A test is defined as the amount (µg) of antibody that will stain a cell sample in a final volume of 100 µL. Cell number should be determined empirically but can range from 10⁵ to 10⁸ cells/test. It is recommended that the antibody be carefully titrated for optimal performance in the assay of interest.

References

Lee JM, Kim YJ, Ra H, Kang SJ, Han S, Koh JY, Kim YH. The involvement of caspase-11 in TPEN-induced apoptosis. *FEBS Lett.* 2008 Jun 11;582(13):1871-6. 2008 May 12.

Endo M, Mori M, Akira S, Gotoh T. C/EBP homologous protein (CHOP) is crucial for the induction of caspase-11 and the pathogenesis of lipopolysaccharide-induced inflammation. *J Immunol.* 2006 May 15;176(10):6245-53.(17D9, WB, PubMed)

Related Products

00-8222 IC Fixation Buffer

00-8333 Permeabilization Buffer (10X)

12-4321 Rat IgG2a K Isotype Control PE

Not for further distribution without written consent.

Copyright © 2000-2010 eBioscience, Inc.

Tel: 888.999.1371 or 858.642.2058 • Fax: 858.642.2046 • www.eBioscience.com • info@eBioscience.com