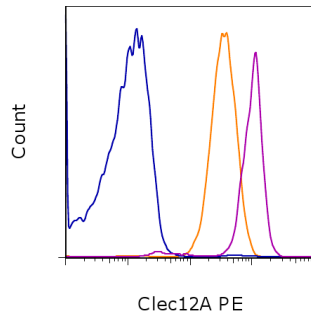


Anti-Human Clec12A PE

Catalog Number: 12-9878

Also known as: Myeloid Inhibitory C-type Lectin-like Receptor

RUO: For Research Use Only. Not for use in diagnostic procedures.



Staining of normal human peripheral blood cells with Anti-Human Clec12A PE. Cells in the lymphocyte (blue histogram), monocyte (orange histogram), and granulocyte (purple histogram) gates were used for analysis.

Product Information



Contents: Anti-Human Clec12A PE

Catalog Number: 12-9878

Clone: HB3

Concentration: 5 μ L (0.125 μ g)/test

Host/Isotype: Mouse IgG1, kappa



Formulation: aqueous buffer, 0.09% sodium azide, may contain carrier protein/stabilizer

Temperature Limitation: Store at 2-8°C. Do not freeze. Light-sensitive material.



Batch Code: Refer to vial



Use By: Refer to vial

Description

This HB3 monoclonal antibody reacts with human Clec12A, which is also known as Myeloid Inhibitory C-type Lectin-like receptor (MIGL). Clec12A is a highly glycosylated transmembrane receptor with a cytoplasmic ITIM that associates with SHP1 and SHP2. Clec12A is expressed mainly on granulocytes, monocytes, macrophages, and dendritic cells, including plasmacytoid dendritic cells. Expression of Clec12A on NK cells remains controversial. Although the function of Clec12A is not fully understood, studies suggest that this receptor plays a role in inflammation and LPS activation.

Applications Reported

This HB3 antibody has been reported for use in flow cytometric analysis.

Applications Tested

This HB3 antibody has been pre-titrated and tested by flow cytometric analysis of normal human peripheral blood cells. This can be used at 5 μ L (0.125 μ g) per test. A test is defined as the amount (μ g) of antibody that will stain a cell sample in a final volume of 100 μ L. Cell number should be determined empirically but can range from 10^5 to 10^8 cells/test.

References

Larsen HO, Roug AS, Just T, Brown GD, Hokland P. Expressin of the hMIGL in acute myeloid leukemia – a highly reliable disease marker at diagnosis and during follow-up. *Cytometry Part B: Clinical Cytometry*. doi: 10.1002/cyto.b.20614.

Lahoud MH, Proietto AI, Ahmet F, Kitsoulis S, Eidsmo L, Wu L, Sathe P, Pietersz S, Chang HW, Walker ID, Maraskovsky E, Braley H, Lew AM, Wright MD, Heath WR, Shortman K, Caminschi I. The C-type lectin Clec12A present on mouse and human dendritic cells can serve as a target for antigen delivery and enhancement of antibody responses. *J Immunol*. 2009 Jun 15;182(12):7587-94.

Marshall AS, Willment JA, Pyz E, Dennehy KM, Reid DM, Dri P, Gordon S, Wong SY, Brown GD. Human MIGL

Not for further distribution without written consent.

Copyright © 2000-2012 eBioscience, Inc.

Tel: 888.999.1371 or 858.642.2058 • Fax: 858.642.2046 • www.ebioscience.com •
info@ebioscience.com

Anti-Human Clec12A PE

Catalog Number: 12-9878

Also known as: Myeloid Inhibitory C-type Lectin-like Receptor

RUO: For Research Use Only. Not for use in diagnostic procedures.

(CLEC12A) is differentially glycosylated and is down-regulated following cellular activation. Eur J Immunol. 2006 Aug;36(8):2159-69. (HB3, FC)

Marshall AS, Willment JA, Lin HH, Williams DL, Gordon S, Brown GD. Identification and characterization of a novel human myeloid inhibitory C-type lectin-like receptor (MIGL) that is predominantly expressed on granulocytes and monocytes. J Biol Chem. 2004 Apr 9;279(15):14792-802.

Related Products

11-0168 Anti-Human CD16 FITC (eBioCB16 (CB16))

12-4714 Mouse IgG1 K Isotype Control PE (P3.6.2.8.1)

17-1239 Anti-Human CD123 APC (6H6)

Not for further distribution without written consent.

Copyright © 2000-2012 eBioscience, Inc.

Tel: 888.999.1371 or 858.642.2058 • Fax: 858.642.2046 • www.ebioscience.com •
info@ebioscience.com