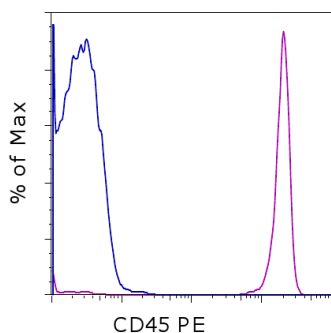


Anti-Human CD45 PE

Catalog Number: 12-9459

Also known as: LCA

RUO: For Research Use Only. Not for use in diagnostic procedures.



Staining of normal human peripheral blood cells with Mouse IgG1 K Isotype Control PE (cat. 12-4714) (blue histogram) or Anti-Human CD45 PE (purple histogram). Cells in the lymphocyte gate were used for analysis.

Product Information



Contents: Anti-Human CD45 PE

Catalog Number: 12-9459

Clone: 2D1

Concentration: 5 μ L (0.125 μ g)/test

Host/Isotype: Mouse IgG1, kappa



Formulation: aqueous buffer, 0.09% sodium azide, may contain carrier protein/stabilizer

Temperature Limitation: Store at 2-8°C. Do not freeze. Light-sensitive material.



Batch Code: Refer to vial



Use By: Refer to vial

Description

The 2D1 monoclonal antibody reacts with all isoforms of human CD45, also known as Leukocyte Common Antigen (LCA). CD45 is expressed by all hematopoietic cells excluding circulating erythrocytes and platelets. The cytoplasmic portion of CD45 has tyrosine phosphatase enzymatic activity and plays an important role in activation of lymphocytes.

Applications Reported

This 2D1 antibody has been reported for use in flow cytometric analysis.

Applications Tested

This 2D1 antibody has been pre-titrated and tested by flow cytometric analysis of normal human peripheral blood cells. This can be used at 5 μ L (0.125 μ g) per test. A test is defined as the amount (μ g) of antibody that will stain a cell sample in a final volume of 100 μ L. Cell number should be determined empirically but can range from 10^5 to 10^8 cells/test.

References

Bradstock K.F., Janossy G., Pizzolo G., Hoffbrand A.V., McMichael A., Pilch J.R., Milstein C., Beverley P., Bollum F.J. Subpopulations of normal and leukemic human thymocytes: an analysis with the use of monoclonal antibodies. J Natl Cancer Inst. 1980 Jul; 65(1):33-42.

Tchilian E.Z., Wallace D.L., Wells R.S., Flower D.R., Morgan G., Beverley P.C. A deletion in the gene encoding the CD45 antigen in a patient with SCID. J Immunol. 2001 Jan 15;166(2):1308-13.

Related Products

12-4714 Mouse IgG1 K Isotype Control PE (P3.6.2.8.1)

Not for further distribution without written consent.

Copyright © 2000-2012 eBioscience, Inc.

Tel: 888.999.1371 or 858.642.2058 • Fax: 858.642.2046 • www.ebioscience.com •
info@ebioscience.com