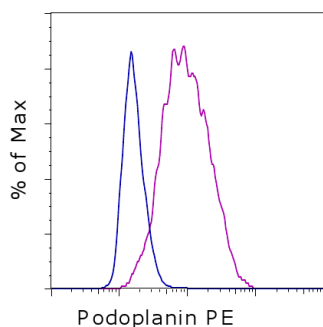


## Anti-Human Podoplanin PE

**Catalog Number:** 12-9381

**Also known as:** PDPN

**RUO: For Research Use Only. Not for use in diagnostic procedures.**



Staining of the U87 cell line with Rat IgG2a K Isotype Control PE (cat. 12-4321) (blue histogram) or Anti-Human Podoplanin PE (purple histogram). Total viable cells were used for analysis.

### Product Information



**Contents:** Anti-Human Podoplanin PE

**Catalog Number:** 12-9381

**Clone:** NZ-1.3

**Concentration:** 5  $\mu$ L (0.25  $\mu$ g)/test

**Host/Isotype:** Rat IgG2a



**Formulation:** aqueous buffer, 0.09% sodium azide, may contain carrier protein/stabilizer

**Temperature Limitation:** Store at 2-8°C. Do not freeze. Light sensitive material.

**Batch Code:** Refer to vial

**Use By:** Refer to vial

### Description

Podoplanin is a 40-kDa type I transmembrane sialomucin-like glycoprotein involved in platelet aggregation and cancer metastasis. This protein is expressed on lymphatic endothelial cells and follicular dendritic cells, as well as on many human cancers, including squamous cell carcinoma, glioblastoma, seminoma, and mesothelioma. Podoplanin expression has been demonstrated to be regulated by the Fos protein of the Activating Protein-1 (AP-1) transcription factor complex. Much of its functionality arises via interaction with its endogenous receptor, C-type lectin-like receptor-2 (CLEC-2).

This antibody has been reported to block the interaction between Podoplanin and CLEC-2.

### Applications Reported

This NZ-1.3 antibody has been reported for use in flow cytometric analysis.

### Applications Tested

This NZ-1.3 antibody has been pre-titrated and tested by flow cytometric analysis of U87 cells. This can be used at 5  $\mu$ L (0.25  $\mu$ g) per test. A test is defined as the amount ( $\mu$ g) of antibody that will stain a cell sample in a final volume of 100  $\mu$ L. Cell number should be determined empirically but can range from  $10^5$  to  $10^8$  cells/test.

### References

Xie Q, Chen L, Fu K, Harter J, Young KH, Sunkara J, Novak D, Villanueva-Siles E, Ratech H. Podoplanin (d2-40): a new immunohistochemical marker for reactive follicular dendritic cells and follicular dendritic cell sarcomas.

Ogasawara S, Kaneko MK, Price JE, Kato Y. Characterization of anti-podoplanin monoclonal antibodies: critical epitopes for neutralizing the interaction between podoplanin and CLEC-2. Hybridoma (Larchmt). 2008 Aug;27(4):323. (NZ-1.3, WB, FC, Pubmed)

Durchdewald M, Guinea-Viniegra J, Haag D, Riehl A, Lichter P, Hahn M, Wagner EF, Angel P, Hess J. Podoplanin is a novel fos target gene in skin carcinogenesis. Cancer Res. 2008 Sep 1;68(17):6877-83.

Not for further distribution without written consent.

Copyright © 2000-2012 eBioscience, Inc.

Tel: 888.999.1371 or 858.642.2058 • Fax: 858.642.2046 • [www.ebioscience.com](http://www.ebioscience.com) •  
[info@ebioscience.com](mailto:info@ebioscience.com)

---

## **Anti-Human Podoplanin PE**

**Catalog Number:** 12-9381

**Also known as:** PDPN

**RUO: For Research Use Only. Not for use in diagnostic procedures.**

---

### **Related Products**

12-0219 Anti-Human CD21 PE (HB5)

12-4321 Rat IgG2a K Isotype Control PE (eBR2a)

14-9968 Anti-Human FDC Purified (CNA.42)

17-0409 Anti-Human CD40 APC (5C3)