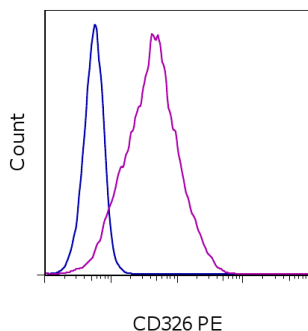


Anti-Human CD326 (EpCAM) PE

Catalog Number: 12-9326

Also known as: Epithelial cell adhesion molecule, KSA, TROP1

RUO: For Research Use Only. Not for use in diagnostic procedures.



Staining of A549 human lung carcinoma cell line with Mouse IgG1 K Isotype Control PE (cat. 12-4714) (open histogram) or Anti-Human CD326 (EpCAM) PE (filled histogram). Total viable cells were used for analysis.

Product Information



Contents: Anti-Human CD326 (EpCAM) PE

Catalog Number: 12-9326

Clone: 1B7

Concentration: 5 μ L (0.125 μ g)/test

Host/Isotype: Mouse IgG1, kappa



LOT



Formulation: aqueous buffer, 0.09% sodium azide, may contain carrier protein/stabilizer

Temperature Limitation: Store at 2-8°C. Do not freeze. Light sensitive material.

Batch Code: Refer to vial

Use By: Refer to vial

Contains sodium azide

Description

EpCAM (Epithelial cell adhesion molecule, CD326, KSA, TROP1) is a 40 kD cell-surface adhesion molecule participating in homophilic, calcium-independent cell-cell interactions. EpCAM is a type-I transmembrane protein, and is expressed primarily on the basolateral surface of most epithelia. Although normal epithelia express low levels of EpCAM, increased expression has been correlated with increased proliferation and progression to a mesenchymal phenotype. EpCAM has also been used as a diagnostic marker on circulating metastatic carcinoma cells, while cancer cells of non-epithelial origin do not express EpCAM.

Applications Reported

This 1B7 antibody has been reported for use in flow cytometric analysis.

Applications Tested

This 1B7 antibody has been pre-titrated and tested. This can be used at 5 μ L (0.125 μ g) per test. A test is defined as the amount (μ g) of antibody that will stain a cell sample in a final volume of 100 μ L. Cell number should be determined empirically but can range from 10^5 to 10^8 cells/test.

References

Suzuki K, Nakamura K, Kato K, Hamada H, Tsukamoto T. Exploration of target molecules for prostate cancer gene therapy. Prostate. 2007 Aug 1;67(11):1163-73. (1B7, FC, IHC, PubMed)

Rao CG, Chianese D, Doyle GV, Miller MC, Russell T, Sanders RA Jr, Terstappen LW. Expression of epithelial cell adhesion molecule in carcinoma cells present in blood and primary and metastatic tumors. Int J Oncol. 2005 Jul;27(1):49-57. (PubMed)

Litvinov SV, Bakker HA, Gourevitch MM, Velders MP, Warnaar SO. Evidence for a role of the epithelial glycoprotein 40 (Ep-CAM) in epithelial cell-cell adhesion. Cell Adhes Commun. 1994 Oct;2(5):417-28. (PubMed)

Litvinov SV, Velders MP, Bakker HA, Fleuren GJ, Warnaar SO. Ep-CAM: a human epithelial antigen is a homophilic

Not for further distribution without written consent.

Copyright © 2000-2012 eBioscience, Inc.

Tel: 888.999.1371 or 858.642.2058 • Fax: 858.642.2046 • www.ebioscience.com • info@ebioscience.com

Anti-Human CD326 (EpCAM) PE

Catalog Number: 12-9326

Also known as: Epithelial cell adhesion molecule, KSA, TROP1

RUO: For Research Use Only. Not for use in diagnostic procedures.

cell-cell adhesion molecule. J Cell Biol. 1994 Apr;125(2):437-46. (PubMed)

Related Products

12-4714 Mouse IgG1 K Isotype Control PE (P3.6.2.8.1)