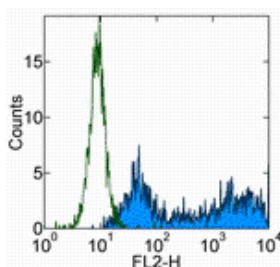


Anti-Human IL-12/IL-23 p40 PE

Catalog Number: 12-7129

Also Known As: Interleukin-12/Interleukin-23 p40/70

RUO: For Research Use Only



Intracellular staining of unstimulated (left) and 2-hour IFN lambda/overnight LPS-stimulated (right) human peripheral blood cells with staining buffer (autofluorescence) (open histogram) or Anti-Human IL-12/IL-23 p40 PE (filled histogram). Cells in the monocyte gate were used for analysis.

Product Information

Contents: Anti-Human IL-12/IL-23 p40 PE


REF **Catalog Number:** 12-7129

Clone: C8.6


Concentration: ug size: 0.2 mg/mL; test size: 5 uL (0.06 ug)/test


Host/Isotype: Mouse IgG1, kappa

Formulation: aqueous buffer, 0.09% sodium azide, may contain carrier protein/stabilizer

 **Temperature Limitation:** Store at 2-8°C. Do not freeze. Light sensitive material.

LOT **Batch Code:** Refer to Vial

 **Use By:** Refer to Vial

 **Caution, contains Azide**

Description

The C8.6 antibody reacts with the p40 subunit of human IL-12 p70 and human IL-23. IL-12 is a 70 kDa heterodimeric cytokine composed of two covalently linked chains, p40 and p35, and secreted primarily by activated monocytes, macrophages, and dendritic cells. IL-23 is a biologically-related, heterodimeric cytokine composed of disulfide-linked p40 and p19 subunits.

Applications Reported

The C8.6 antibody has been reported for use in intracellular flow cytometric analysis.

Applications Tested

This C8.6 antibody is offered in 2 formats:

- µg size: has been tested by intracellular flow cytometric analysis. This can be used at less than or equal to 0.125 µg per test. A test is defined as the amount (µg)/test of antibody that will stain a cell sample in a final volume of 100 µL. Cell number should be determined empirically but can range from 10⁵ to 10⁸ cells/test. It is recommended that the antibody be carefully titrated for optimal performance in the assay of interest.

- test size: has been pre-titrated and tested by intracellular flow cytometric analysis. This can be used at test size: 5 µL (0.06 µg)/per test. A test is defined as the amount (µg)/test of antibody that will stain a cell sample in a final volume of 100 µL. Cell number should be determined empirically but can range from 10⁵ to 10⁸ cells/test. The pre-titrated test size contains BSA and/or gelatin for protein stabilization.

References

Cho, D., et al. 1996. Enhancement of porcine natural killer cell activity by recombinant human and murine IL-12. *Cell Immunol.* 172: 29-34.

Aragane, Y, et al. 1994. IL-12 is expressed and released by human keratinocytes and epidermoid carcinoma cell lines. *J Immunol.* 153: 5366-72.

Related Products

12-4714 Mouse IgG1 K Isotype Control PE

Not for further distribution without written consent.

Copyright © 2000-2010 eBioscience, Inc.

Tel: 888.999.1371 or 858.642.2058 • Fax: 858.642.2046 • www.eBioscience.com • info@eBioscience.com