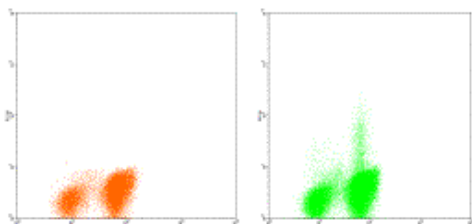


Anti-Human IL-4 PE

Catalog Number: 12-7049

Also Known As: Interleukin-4

RUO: For Research Use Only



Normal human peripheral blood cells were stimulated with PMA and Ionomycin in the presence of brefeldin A for 6 hours. The cells were surface stained with Anti-Human CD3 FITC (cat. 11-0038) and intracellularly stained with Anti-Human IL-4 PE (right panel). Left panel demonstrates unlabelled antibody blocking control.

Product Information

Contents: Anti-Human IL-4 PE


REF Catalog Number: 12-7049

Clone: 8D4-8


Concentration: mg size: 0.2 mg/mL; test size: 5 μ L (0.125 μ g)/test


Host/Isotype: Mouse IgG1, kappa

Formulation: aqueous buffer, 0.09% sodium azide, may contain carrier protein/stabilizer

 **Temperature Limitation:** Store at 2-8°C. Do not freeze. Light sensitive material.

 **Batch Code:** Refer to Vial

 **Use By:** Refer to Vial

 **Caution, contains Azide**

Description

The 8D4-8 antibody reacts with human interleukin-4 (IL-4), a 15-19 kDa cytokine secreted by Th2 cells.

Applications Reported

The 8D4-8 antibody has been reported for use as a capture antibody for human IL-4 ELISA and for intracellular staining for flow cytometric analysis.

Applications Tested

The fluorochrome-conjugated 8D4-8 antibody is offered in 2 formats:

- μ g size: has been tested by intracellular staining for flow cytometric analysis. This can be used at less than or equal to 0.5 μ g per test. A test is defined as the amount (μ g)/test of antibody that will stain a cell sample in a final volume of 100 μ L. Cell number should be determined empirically but can range from 10^5 to 10^8 cells/test. It is recommended that the antibody be carefully titrated for optimal performance in the assay of interest.

- test size: has been pre-titrated and tested by intracellular staining for flow cytometric analysis. This can be used at test size: 5 μ L (0.125 μ g)/per test. A test is defined as the amount (μ g)/test of antibody that will stain a cell sample in a final volume of 100 μ L. Cell number should be determined empirically but can range from 10^5 to 10^8 cells/test.

References

Bird, C., et al. 1991. Development of immunoassays for human interleukin-3 and interleukin-4, some of which discriminate between different recombinant cDNA-derived molecules. Cytokine. 3: 562-567.

Related Products

11-0038 Anti-Human CD3 FITC (UCHT1)

12-4714 Mouse IgG1 K Isotype Control PE (P3.6.2.1)

88-8823 Fixation & Permeabilization Buffers

Not for further distribution without written consent.

Copyright © 2000-2010 eBioscience, Inc.

Tel: 888.999.1371 or 858.642.2058 • Fax: 858.642.2046 • www.eBioscience.com • info@eBioscience.com