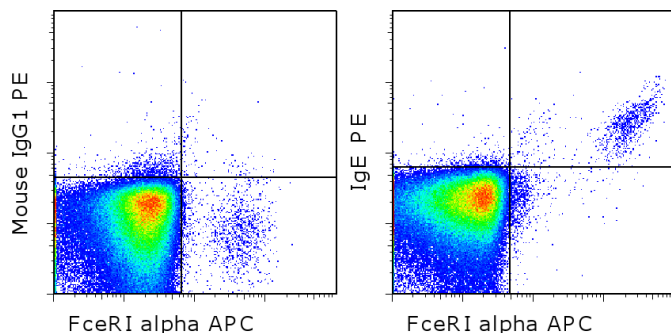


Anti-Human IgE PE

Catalog Number: 12-6986

Also known as: Immunoglobulin E, Ig E

RUO: For Research Use Only. Not for use in diagnostic procedures.



Staining of normal human peripheral blood cells with Anti-Human Fc epsilon Receptor I alpha (FceR1) APC (cat. 17-5899) and Mouse IgG1 K Isotype Control PE (cat. 12-4714) (left) or Anti-Human IgE PE (right). Cells in the lymphocyte were used for analysis.

Product Information



Contents: Anti-Human IgE PE

Catalog Number: 12-6986

Clone: Ige21

Concentration: 5 uL (0.125 ug)/test

Host/Isotype: Mouse IgG1, kappa



Formulation: aqueous buffer, 0.09% sodium azide, may contain carrier protein/stabilizer

Temperature Limitation: Store at 2-8°C. Do not freeze. Light sensitive material.



Batch Code: Refer to vial



Use By: Refer to vial



Contains sodium azide

Description

The monoclonal antibody IgE21 recognizes the immunoglobulin E class of antibodies. The natural levels of IgE in the serum are quite low, comprising only a small portion of the total immunoglobulin. IgE plays a role in allergy responses by binding to mast cells and basophils through the Fcε receptor I which results in the release of histamine and other molecules. The IgE is produced by terminally differentiated plasma B cells and basophils. Like all immunoglobulins, IgE is expressed as a soluble molecule as well as a membrane bound form. IgE21 recognizes both forms.

Applications Reported

This Ige21 antibody has been reported for use in flow cytometric analysis.

Applications Tested

This Ige21 antibody has been pre-titrated and tested by flow cytometric analysis of human peripheral blood cells. This can be used at 5 µL (0.125 µg) per test. A test is defined as the amount (ug) of antibody that will stain a cell sample in a final volume of 100 µL. Cell number should be determined empirically but can range from 10⁵ to 10⁸ cells/test.

References

Sainte-Laudy J, Belon P. Use of four different flow cytometric protocols for the analysis of human basophil activation. Application to the study of the biological activity of high dilutions of histamine. *Inflamm. res.* 55, Supplement 1. 2006;S23-S24. (FC)

Chang TW, Davis F, Sun N, Sun C, MacGlashan D, Hamilton R. Monoclonal antibodies specific for human IgE-producing B cells: a potential therapeutic for IgE-mediated allergies. *NPG Bio/technology.* 1990 Feb;8:122-126.

Related Products

12-4714 Mouse IgG1 K Isotype Control PE (P3.6.2.8.1)

17-5899 Anti-Human Fc epsilon Receptor I alpha (FceR1) APC (AER-37 (CRA1))

Not for further distribution without written consent.

Copyright © 2000-2012 eBioscience, Inc.

Tel: 888.999.1371 or 858.642.2058 • Fax: 858.642.2046 • www.ebioscience.com •
info@ebioscience.com

Anti-Human IgE PE

Catalog Number: 12-6986

Also known as: Immunoglobulin E, Ig E

RUO: For Research Use Only. Not for use in diagnostic procedures.

Not for further distribution without written consent.

Copyright © 2000-2012 eBioscience, Inc.

Tel: 888.999.1371 or 858.642.2058 • Fax: 858.642.2046 • www.ebioscience.com •
info@ebioscience.com