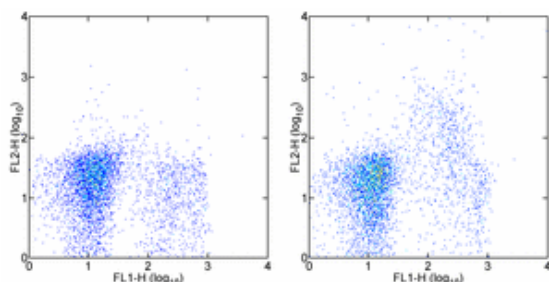


## Anti-Mouse Ly-51 (BP-1) PE

Catalog Number: 12-5995

Also Known As: BP1, 6C3, Ly51

RUO: For Research Use Only



Staining of C57BL/6 bone marrow cells with Anti-Human/Mouse CD45R (B220) FITC (cat. 11-0452) and 0.25 µg of Rat IgG1 κ Isotype Control PE (cat. 12-4301) (left) or 0.25 µg of Anti-Mouse Ly-51 (BP-1) PE (right). Total viable cells were used for analysis.

### Product Information

Contents: Anti-Mouse Ly-51 (BP-1) PE

**REF** Catalog Number: 12-5995

Clone: FG35.4

Concentration: 0.2 mg/ml

Host/Isotype: Rat IgG1, κ

Formulation: aqueous buffer, 0.09% sodium azide, may contain carrier protein/stabilizer



Temperature Limitation: Store at 2-8°C. Do not freeze. Light sensitive material.



Batch Code: Refer to Vial



Use By: Refer to Vial



Caution, contains Azide

### Description

The FG35.4 monoclonal antibody reacts with mouse BP-1, also known as Ly-51 and 6C3 antigen. BP-1 is a 140 kDa type II transmembrane protein that is present on the surface as a disulfide-linked homodimer. This molecule is an enzyme with aminopeptidase A (APA) activity and is expressed by bone marrow stromal cells, thymic cortical epithelial cells and at early stages of mouse B cell development, on pre-B cells. The low level of BP-1 expression on pre-B cells can be upregulated in the presence of IL-7.

### Applications Reported

FG35.4 has been reported for use in flow cytometric analysis and immunoprecipitation.

### Applications Tested

The FG35.4 antibody has been tested by flow cytometric analysis of mouse bone marrow cell suspensions and can be used at less than or equal to 0.2 µg per test. A test is defined as the amount (µg) of antibody that will stain a cell sample in a final volume of 100 µL. Cell number should be determined empirically but can range from 10<sup>5</sup> to 10<sup>8</sup> cells/test. It is recommended that the antibody be carefully titrated for optimal performance in the assay of interest.

### References

Cooper, M. D., D. Mulvaney, et al. (1986). "A novel cell surface molecule on early B-lineage cells." *Nature* 321(6070): 616-8.

### Related Products

12-4301 Rat IgG1 K Isotype Control PE

Not for further distribution without written consent.

Copyright © 2000-2010 eBioscience, Inc.

Tel: 888.999.1371 or 858.642.2058 • Fax: 858.642.2046 • [www.eBioscience.com](http://www.eBioscience.com) • [info@eBioscience.com](mailto:info@eBioscience.com)