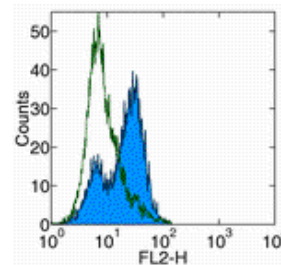


Product Information

Contents: Phycoerythrin (PE) anti-mouse IgE
 Catalog Number: 12-5992
 Sizes: 50 ug, 100 ug, 200 ug
 Formulation: Phosphate buffer pH 7.2,
 150 mM NaCl, 0.09% NaN₃
 Storage Conditions: Store at 4°C.
 DO NOT FREEZE.
 LIGHT-SENSITIVE MATERIAL.
 Clone: 23G3
 Isotype: Rat IgG1, κ



Surface staining of IGEL cells with anti-mouse IgE (23G3) PE. Appropriate isotype controls were used (open histogram). Total viable cells were used for analysis.

Available Formats of This Product				
Cat. No.	Format	Excite (nm)	Emit (nm)	Reported Applications
11-5992	Anti-Mouse IgE FITC	488 nm	518 nm	FC
12-5992	Anti-Mouse IgE PE	488 nm	575 nm	FC
13-5992	Anti-Mouse IgE Biotin	N/A	N/A	ELISA FC
14-5992	Anti-Mouse IgE Purified	N/A	N/A	ELISA FC

Flow Cytometry Product Notes:
 Test Sizes: To accommodate multicolor flow cytometry, eBioscience is in the process of reducing test size volumes from 20 µl to 5 µl. Please check your antibody vial for the recommended test size.
 Fluorochrome Replacements: eBioscience is in the process of replacing all Pacific Blue® and APC-Alexa Fluor® 750 conjugated products with eFluor™ 450 and APC-eFluor™ 780 conjugated products, respectively.

Custom Product Requests
Need a custom product? Download the Custom Product Request Form and submit completed form to customs@ebioscience.com .

Questions? Please consult our answers to frequently asked questions at <http://www.ebioscience.com/faq>.

Description

The 23G3 monoclonal antibody reacts with the ε heavy chain of mouse IgE. It does not react with other classes of mouse immunoglobulin including IgD, IgG, IgA, or IgM.

Applications Reported

For research use only, not for diagnostic or therapeutic use. The 23G3 antibody has been reported for use in flow cytometric analysis.

Applications Tested

The 23G3 antibody has been tested by ELISA and can be used at 1:5000-1:10000. This 23G3 antibody has also been tested by flow cytometric analysis of IGEL cells, and can be used at less than or equal to 1 µg per million cells in a 100 µl total staining volume. It is recommended that the antibody be carefully titrated for optimal performance in the assay of interest.

References

Keegan AD, Fratazzi C, Shopes B, Baird B, Conrad DH. 1991. Characterization of new rat anti-mouse IgE monoclonals and their use along with chimeric IgE to further define the site that interacts with Fc epsilon RII and Fc epsilon RI. *Mol Immunol.* 28(10):1149-54.

Related Products

Cat. 12-4301 PE Rat IgG1 Isotype Control

Cat. 24-5093 Polyclonal anti-mouse IgD antiserum (activating) (clone Polyclonal)

Copyright © 2000-2008 eBioscience, Inc.

For Research Use Only. Not for use in diagnostic procedures. Not for further distribution without written consent.

