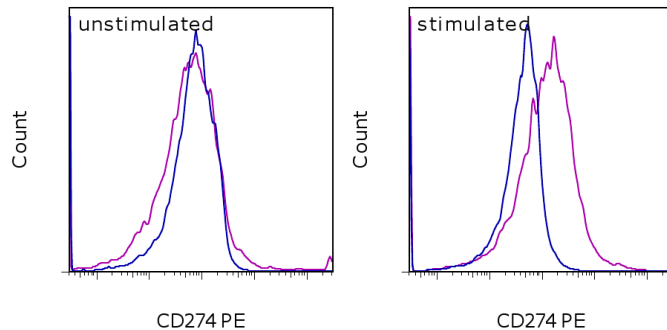


Anti-Human CD274 (B7-H1) PE

Catalog Number: 12-5983

Also known as: PD-L1

RUO: For Research Use Only. Not for use in diagnostic procedures.



Staining of unstimulated (left) or PHA-stimulated (right) normal human peripheral blood cells with Mouse IgG1 K Isotype Control PE (cat. 12-4714) (blue histogram) or Anti-Human CD274 (B7-H1) PE (purple histogram). Total viable cells were used for analysis.

Product Information

Contents: Anti-Human CD274 (B7-H1) PE

REF **Catalog Number:** 12-5983

Clone: MIH1

Concentration: 5 μ L (0.5 μ g)/test

Host/Isotype: Mouse IgG1

Formulation: aqueous buffer, 0.09% sodium

azide, may contain carrier protein/stabilizer

Temperature Limitation: Store at 2-8°C. Do not freeze. Light sensitive material.

Batch Code: Refer to vial

Use By: Refer to vial



LOT



Description

The MIH1 monoclonal antibody reacts with human B7-H1, also known as PD-L1. B7-H1, a member of the B7 family, has a predicted molecular weight of approximately 40 kDa and belongs to the Ig superfamily. B7-H1 is expressed on a majority of leukocytes. B7-H1 is a ligand for PD-1. Interaction of PD-1 with either PD-L1 (B7-H1) or PD-L2 (B7-DC) results in inhibition of T and B cell responses. MIH1 is reported to be a blocking antibody.

Applications Reported

The MIH1 antibody has been reported for use in flow cytometric analysis.

Applications Tested

This MIH1 antibody has been pre-titrated and tested by flow cytometric analysis of human peripheral blood leukocytes. This can be used at 5 μ L (0.5 μ g) per test. A test is defined as the amount (μ g) of antibody that will stain a cell sample in a final volume of 100 μ L. Cell number should be determined empirically but can range from 10^5 to 10^8 cells/test.

References

Chen Y, Zhang J, Li J, Zou L, Zhao T, Tang Y, Wu Y. Expression of B7-H1 in inflammatory renal tubular epithelial cells. *Nephron Exp Nephrol*. 2006; 102(3-4):e81-92. (**MIH1**, IH/F, FA, PubMed)

Saudemont, A., Jouy, N., Hetuin, D., and Quesnel, B. 2005. NK cells that are activated by CXCL10 can kill dormant tumor cells that resist CTL-mediated lysis and can express B7-H1 that stimulates T cells. *Blood*. 105:2428-2435.

Ohgashi Y, Sho M, Yamada Y, Tsurui Y, Hamada K, Ikeda N, Mizuno T, Yoriki R, Kashizuka H, Yane K, Tsushima F, Otsuki N, Yagita H, Azuma M, Nakajima Y. Clinical significance of programmed death-1 ligand-1 and programmed death-1 ligand-2 expression in human esophageal cancer. *Clin Cancer Res*. 2005 Apr 15;11(8):2947-53. (**MIH1**, IH/F, PubMed)

Kanai T, Totsuka T, Uraushihara K, Makita S, Nakamura T, Koganei K, Fukushima T, Akiba H, Yagita H, Okumura K,

Not for further distribution without written consent.

Copyright © 2000-2012 eBioscience, Inc.

Tel: 888.999.1371 or 858.642.2058 • Fax: 858.642.2046 • www.ebioscience.com •
info@ebioscience.com

Anti-Human CD274 (B7-H1) PE

Catalog Number: 12-5983

Also known as: PD-L1

RUO: For Research Use Only. Not for use in diagnostic procedures.

Machida U, Iwai H, Azuma M, Chen L, Watanabe M. 2003. Blockade of B7-H1 suppresses the development of chronic intestinal inflammation. *J Immunol.* 171(8):4156-63.

Freeman, G. J., A. J. Long, et al. 2000. Engagement of the PD-1 immunoinhibitory receptor by a novel B7 family member leads to negative regulation of lymphocyte activation. *J Exp Med* 192(7): 1027-34.

Dong, H., G. Zhu, et al. 1999. B7-H1, a third member of the B7 family, co-stimulates T-cell proliferation and interleukin-10 secretion. *Nat Med* 5(12): 1365-9.

Related Products

12-4714 Mouse IgG1 K Isotype Control PE (P3.6.2.8.1)

Not for further distribution without written consent.

Copyright © 2000-2012 eBioscience, Inc.

Tel: 888.999.1371 or 858.642.2058 • Fax: 858.642.2046 • www.ebioscience.com •
info@ebioscience.com