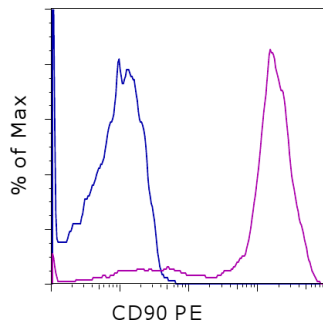


## Anti-Canine CD90 (Thy-1) PE

**Catalog Number:** 12-5900

**Also known as:** Thy1

**RUO: For Research Use Only. Not for use in diagnostic procedures.**



Staining of normal canine peripheral blood cells with Rat IgG2b kappa Isotype Control PE (cat. 12-4031) (blue histogram) or Anti-Canine CD90 (Thy-1) PE (purple histogram). Cells in the lymphocyte gate were used for analysis.

### Product Information

**Contents:** Anti-Canine CD90 (Thy-1) PE  
**Catalog Number:** 12-5900  
**Clone:** YKIX337.217  
**Concentration:** 5  $\mu$ L (0.5  $\mu$ g)/test  
**Host/Isotype:** Rat IgG2b, kappa

REF



LOT



**Formulation:** aqueous buffer, 0.09% sodium azide, may contain carrier protein/stabilizer  
**Temperature Limitation:** Store at 2-8°C. Do not freeze. Light sensitive material.  
**Batch Code:** Refer to vial  
**Use By:** Refer to vial

### Description

This YKIX337.217 monoclonal antibody reacts with canine CD90, which is also known as Thy-1. This 25-37 kDa N-glycosylated cell adhesion molecule is expressed on thymocytes, peripheral T cells, some B cells, monocytes, and granulocytes albeit at a lower level. CD90 is also expressed on cells in the bone marrow, brain, and kidney, as well as on mesenchymal stem cells.

This monoclonal antibody has been reported to deplete cells *in vitro* and *in vivo*.

### Applications Reported

This YKIX337.217 antibody has been reported for use in flow cytometric analysis.

### Applications Tested

This YKIX337.217 antibody has been pre-titrated and tested by flow cytometric analysis of normal canine peripheral blood cells. This can be used at 5  $\mu$ L (0.5  $\mu$ g) per test. A test is defined as the amount ( $\mu$ g) of antibody that will stain a cell sample in a final volume of 100  $\mu$ L. Cell number should be determined empirically but can range from  $10^5$  to  $10^8$  cells/test.

### References

Kang JW, Kang KS, Koo HC, Park JR, Choi EW, Park YH. Soluble factors-mediated immunomodulatory effects of canine adipose tissue-derived mesenchymal stem cells. *Stem Cells Dev.* 2008 Aug;17(4):681-93.

Cobbold S, Metcalfe S. Monoclonal antibodies that define canine homologues of human CD antigens: summary of the First International Canine Leukocyte Antigen Workshop (CLAW). *Tissue Antigens.* 1994 Mar;43(3):137-54. (YKIX337.217, FC)

McKenzie JL, Fabre JW. Studies with a monoclonal antibody on the distribution of Thy-1 in the lymphoid and extracellular connective tissues of the dog. *Transplantation.* 1981 Apr;31(4):275-82.

### Related Products

Not for further distribution without written consent.

Copyright © 2000-2012 eBioscience, Inc.

Tel: 888.999.1371 or 858.642.2058 • Fax: 858.642.2046 • [www.ebioscience.com](http://www.ebioscience.com) •  
[info@ebioscience.com](mailto:info@ebioscience.com)

---

## Anti-Canine CD90 (Thy-1) PE

**Catalog Number:** 12-5900

**Also known as:** Thy1

**RUO: For Research Use Only. Not for use in diagnostic procedures.**

---

12-4031 Rat IgG2b K Isotype Control PE

---

Not for further distribution without written consent.

Copyright © 2000-2012 eBioscience, Inc.

Tel: 888.999.1371 or 858.642.2058 • Fax: 858.642.2046 • [www.ebioscience.com](http://www.ebioscience.com) •  
[info@ebioscience.com](mailto:info@ebioscience.com)