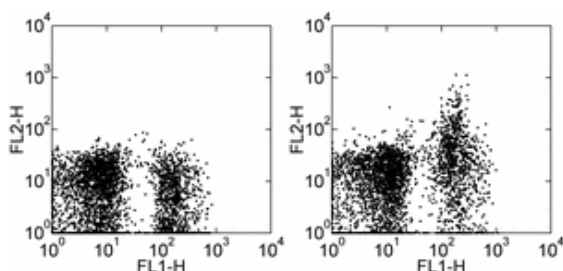


Anti-Mouse BP-1 PE

Catalog Number: 12-5891

Also Known As: BP1, Ly-51, Ly51

RUO: For Research Use Only



Staining of C57BL/6 bone marrow cells with Anti-Human/Mouse CD45R (B220) FITC (cat. 11-0452) and 0.5 µg of Rat IgG2a κ Isotype Control PE (cat. 12-4321) (left) or 0.5 µg of Anti-Mouse BP-1 PE (right). Samples were pre-incubated with Anti-Mouse CD16/CD32 Purified (cat. 14-0161). Total viable cells were used for analysis.

Product Information

Contents: Anti-Mouse BP-1 PE


REF Catalog Number: 12-5891

Clone: 6C3

Concentration: 0.2 mg/ml

Host/Isotype: Rat IgG2a, κ

Formulation: aqueous buffer, 0.09% sodium azide, may contain carrier protein/stabilizer

 Temperature Limitation: Store at 2-8°C. Do not freeze. Light sensitive material.

LOT Batch Code: Refer to Vial

 Use By: Refer to Vial

 Caution, contains Azide

Description

The 6C3 monoclonal antibody reacts with mouse BP-1, also known as Ly-51 and 6C3 antigen. BP-1 is a 140 kDa type II transmembrane protein that is present on the surface as a disulfide-linked homodimer. This molecule is an enzyme with aminopeptidase A (APA) activity and is expressed by bone marrow stromal cells, thymic cortical epithelial cells and at early stages of mouse B cell development, on pre-B cells. The low level of BP-1 expression on pre-B cells can be upregulated in the presence of IL-7.

Applications Reported

The 6C3 antibody has been reported for use in flow cytometric analysis.

Applications Tested

The 6C3 antibody has been tested by flow cytometric analysis of mouse bone marrow cell suspensions. This can be used at less than or equal to 1 µg per test. A test is defined as the amount (µg) of antibody that will stain a cell sample in a final volume of 100 µL. Cell number should be determined empirically but can range from 10⁵ to 10⁸ cells/test. It is recommended that the antibody be carefully titrated for optimal performance in the assay of interest.

References

Pillemer, E., C. Whitlok, I. L. Weissman. 1984. Transformatino-associate proteins in murine B-cell lymphomas that are distinct from Abelson virus gene products. *Proc. Natl. Acad. Sci.* 81:4434-4438

Morse III, H. C., G. F. Tidmarsh, K. L. Holmes, T. F. Frederickson, J. N. Hartley, J. H. Pierce, W. Y. Langdon, M. O. Dailey, and I. L. Weissman. 1987. Expression of the 6C3 antigen on murine hematopoietic neoplasms. Association with expression of *abl*, *ras*, *fes*, *src*, *erbB*, and *Cas NS-1* oncogenes but not with *myc*. *J. Exp. Med.* 165:920-925

Wu, Q., G. F. Tidmarsh, P. A. Welch, J. H. Pierce, I. L. Weissman, M. D. Cooper. 1989. The early B lineage antigen BP-1 and the transformation-associated antigen 6C3 are on the same molecule. *J. Immunol.* 143:3303-3308

Related Products

11-5995 Anti-Mouse Ly-51 (BP-1) FITC (FG35.4)

12-4321 Rat IgG2a K Isotype Control PE

12-5995 Anti-Mouse Ly-51 (BP-1) PE (FG35.4)

13-5995 Anti-Mouse Ly-51 (BP-1) Biotin (FG35.4)

14-5995 Anti-Mouse Ly-51 (BP-1) Purified (FG35.4)

Not for further distribution without written consent.

Copyright © 2000-2010 eBioscience, Inc.

Tel: 888.999.1371 or 858.642.2058 • Fax: 858.642.2046 • www.eBioscience.com • info@eBioscience.com