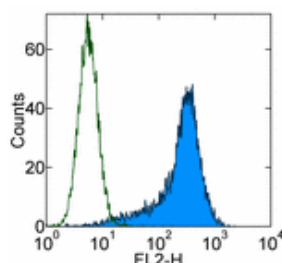


Anti-Mouse ESAM PE

Catalog Number: 12-5852

Also Known As: Endothelial cell-Selective Adhesion Molecule

RUO: For Research Use Only



Staining of bEnd.3 mouse endothelioma cell line with 0.125 µg of Rat IgG2a κ Isotype Control PE (cat. 12-4321) (open histogram) or 0.125 µg of Anti-Mouse ESAM PE (filled histogram). Total viable cells were used for analysis.

Product Information

Contents: Anti-Mouse ESAM PE


REF Catalog Number: 12-5852

Clone: 1G8

Concentration: 0.2 mg/ml


Host/Isotype: Rat IgG2a, κ

Formulation: aqueous buffer, 0.09% sodium azide, may contain carrier protein/stabilizer

 Temperature Limitation: Store at 2-8°C. Do not freeze. Light sensitive material.

LOT Batch Code: Refer to Vial

 Use By: Refer to Vial

 Caution, contains Azide

Description

The 1G8 monoclonal antibody reacts with mouse ESAM (endothelial cell-selective adhesion molecule). ESAM is a 55-kDa membrane protein composed of 2 extracellular Ig domains, a single transmembrane domain, and a 120 amino acid cytoplasmic domain. ESAM is related to members of the junctional adhesion molecule (JAM) family, and is expressed on endothelial cells and activated platelets. ESAM at endothelial tight junctions plays a role in the regulation of vascular permeability, in response to agents such as VEGF or extravasating neutrophils.

Applications Reported

This 1G8 antibody has been reported for use in flow cytometric analysis.

Applications Tested

This 1G8 antibody has been tested by fluorometric analysis. This can be used at less than or equal to 0.25 µg per test. A test is defined as the amount (µg) of antibody that will stain a cell sample in a final volume of 100 µL. Cell number should be determined empirically but can range from 10⁵ to 10⁸ cells/test. It is recommended that the antibody be carefully titrated for optimal performance in the assay of interest.

References

Nasdala I, Wolburg-Buchholz K, Wolburg H, Kuhn A, Ebnet K, Brachtendorf G, Samulowitz U, Kuster B, Engelhardt B, Vestweber D, Butz S. A transmembrane tight junction protein selectively expressed on endothelial cells and platelets. *J Biol Chem.* 2002 May 3;277(18):16294-303. Epub 2002 Feb 14. (1G8, FC, IP, IH/F PubMed)

Wegmann F, Petri B, Khandoga AG, Moser C, Khandoga A, Volkery S, Li H, Nasdala I, Brandau O, Fassler R, Butz S, Krombach F, Vestweber D. ESAM supports neutrophil extravasation, activation of Rho, and VEGF-induced vascular permeability. *J Exp Med.* 2006 Jul 10;203(7):1671-7. Epub 2006 Jul 3. (PubMed)

Wegmann F, Ebnet K, Du Pasquier L, Vestweber D, Butz S. Endothelial adhesion molecule ESAM binds directly to the multidomain adaptor MAGI-1 and recruits it to cell contacts. *Exp Cell Res.* 2004 Oct 15;300(1):121-33. (PubMed)

Related Products

12-4321 Rat IgG2a K Isotype Control PE

