

Product Data Sheet

Alexa Fluor® 488 anti-mouse CD68

Catalog # / Size: 137011 / 25 µg
137012 / 100 µg

Clone: FA-11

Isotype: Rat IgG2a

Immunogen: Purified Con A receptor glycoproteins from the P815 cell line

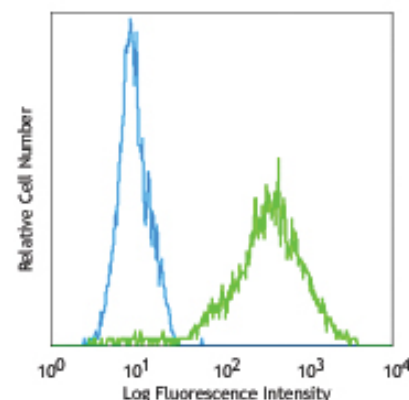
Reactivity: Mouse

Preparation: The antibody was purified by affinity chromatography, and conjugated with Alexa Fluor® 488 under optimal conditions. The solution is free of unconjugated Alexa Fluor® 488.

Formulation: Phosphate-buffered solution, pH 7.2, containing 0.09% sodium azide.

Concentration: 0.5 mg/ml

Storage: The antibody solution should be stored undiluted at 4°C and protected from prolonged exposure to light. **Do not freeze.**



Thioglycolate-elicited Balb/c peritoneal macrophages intracellularly stained with FA-11 Alexa Fluor® 488

Applications:

Applications: FC, ICFC - *Quality tested*

Recommended Usage: Each lot of this antibody is quality control tested by intracellular immunofluorescent staining with flow cytometric analysis. For immunofluorescent staining, the suggested use of this reagent is ≤0.25 µg per million cells in 100 µl volume. It is recommended that the reagent be titrated for optimal performance for each application.

* Alexa Fluor® 488 has a maximum emission of 519 nm when it is excited at 488 nm.

** Alexa Fluor® 488 is a registered trademark of Molecular Probes, Inc. Alexa Fluor® 488 dye antibody conjugates are sold under license from Molecular Probes, Inc. for research use only, except for use in combination with microarrays and high content screening, and are covered by pending and issued patents.

Application Notes: Additional reported (for relevant formats) applications include: immunoprecipitation^{1, 2}, Western Blot^{1, 2}, and immunohistochemical staining of frozen section².

Application References: 1. Silva RP, *et al.* 1999. *Biochem. J.* 338:687. (IP WB)
2. Rabinowitz SS, *et al.* 1991. *J. Exp. Med.* 174:827. (IP WB IHC)

Description: Mouse CD68, also known as macrosialin, is an 85-115 kD member of the lysosomal-associated membrane protein (LAMP) family. It is a heavily glycosylated and predominantly intracellular protein, mainly in late endosomes. Macrosialin is the murine homolog to the human macrophage glycoprotein CD68. It is expressed on tissue macrophages, Langerhans cells and at low levels on dendritic cells. Lamp proteins may have functions relating to cell-cell interaction or cell-ligand interaction. The biological function of CD68 is not completely understood.

Antigen References: 1. Ramprasad MP, *et al.* 1996. *Proc. Natl. Acad. Sci. USA* 93:14833.
2. Smith MJ, *et al.* 1987. *J. Cell. Sci.* 87:113.

Related Products:

Product
Alexa Fluor® 488 Rat IgG2a, κ Isotype Ctrl
Cell Staining Buffer
RBC Lysis Buffer (10X)
TruStain fcX™ (anti-mouse CD16/32)

Clone
RTK2758

93

Application
FC, ICFC
FC, ICC, ICFC
FC, ICFC
FC



For research use only. Not for diagnostic use. Not for resale. BioLegend will not be held responsible for patent infringement or other violations that may occur with the use of our products.



*These products may be covered by one or more Limited Use Label Licenses (see the BioLegend Catalog or our website, www.biollegend.com/ordering#license). BioLegend products may not be transferred to third parties, resold, modified for resale, or used to manufacture commercial products, reverse engineer functionally similar materials, or to provide a service to third parties without written approval of BioLegend. By use of these products you accept the terms and conditions of all applicable Limited Use Label Licenses. Unless otherwise indicated, these products are for research use only and are not intended for human or animal diagnostic, therapeutic or commercial use.